



FOOD & FEED SCIENCES

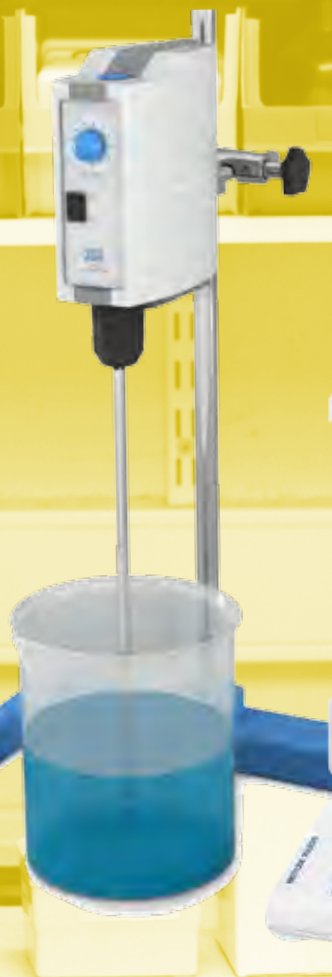
LABORATORY PRODUCTS

EDITION 01 2016

tools for your food lab...

SAMPLE PREP

CHEMICAL



ANALYSIS

BIOLOGICAL ANALYSIS

**your one stop 100% Australian owned science shop,
Online, by phone or face to face...we give you the choice.**



**supplying the scientific
community throughout
Australia and abroad since
1987.**



ROWE SCIENTIFIC
PTY LTD ABN 63.009.437.790



CONTENTS

AGAR	1	HEATING MANTLES	13	SteriPlast®	24
BALANCES	2	KJELDAHL SYSTEMS	14-15	SPATULAS	25
CENTRIFUGES	3	LIQUID HANDLING	16-17	LaboPlast®	25
Centrifuges & accessories	3	Dispensers	16	SteriPlast®	25
Centrifuge tubes	3	Rainin LTS shaft pipettors & tips	16	STIRRING	26-27
CHEMICALS	4-7	Rainin standard shaft pipettors & tips	16	Homogeniser	26
A-D	4	Pipettors	16	Magnetic stirrers & flocculators	26
E-H	5	Pasteur pipettes	16	Stirring motors	27
I-P	6	Pipette tips	17	Stirring paddles	27
Q-Z	7	OVENS	18	STOMACHER BAGS	28
COLONY COUNTER	8	PLASTICWARE	19-21	SWABS	28
ENZYMES	8	Beakers	19	WATER PURIFICATION	29
FILTRATION	9	Bottles – wash	19	Ibis water systems	29
Filters – paper	9	Cuvettes	19	Merck water systems	29
Glass fibre pre-filters	9	Cylinders	19-20	WHIRL-PAK BAGS®	30
Membrane filters	9	Jugs	20		
Syringe filters & Sterifil cups	9	Pipette holders & washers	20		
GLASSWARE	10-12	Pipette - serological	20		
Beakers	10	Petri dishes, centrifuge tubes & containers	21		
Bottles	10	Racks – test tube	21		
Carbodoseur	10	Stirring bars	21		
Cylinder measuring – glass bases	10	ROTARY EVAPORATOR	22		
Cylinder measuring – plastic bases	11	SAFETY	23		
Cylinder measuring – plastic bases with stopper	11	Cabinets	23		
Flasks – Erlenmeyer/filter	11	Eye protection	23		
Flasks – volumetric	12	Gloves	23		
Pipettes – graduated	12	SCOOPS & SPOONS	24		
Pipettes - volumetric	12	LaboPlast®	24		

This catalogue is just a sample of some of the range we can help you with.

If you can't find what you're looking for in this catalogue, try our online web store search function at www.rowe.com.au, or give your local Rowe Scientific consultant a call.

NOTE: We reserve the right to change specifications, details and descriptions without notice. Pictures for illustrative purposes only.



AGAR

ROWE CODE	DESCRIPTION	PACK SIZE
CA2222	Agar bacteriological	500g
CA2272	Agar plate count agar	500g
CA2265	Agar nutrient	500g
CT1012	Tryptone water amyl	500g
CO2243	OGYE agar base	500g
CL1280	Lauryl tryptose broth	500g
CA2292	Agar violet red bile	500g
CA2315	Agar yeast extract	500g
CA22295	Agar MacConkey amyl	500g
CA2288	Agar reinforced clostridial	500g
CP1688	Media modified peptone water buffered	500g
CB0040	Baird-Parker agar base	500g
CA2273	Agar plate count (casein-peptone glucose yeast extract agar for microbiology)	500g
CA2243	Agar nutrient WL for microbiology	500g
CT1013	Tryptone water for microbiology	500g
CA2309	Agar VRB violet red bile agar for microbiology	500g
CA2295	Agar YGC (yeast extract chloroamphenicol agar)	500g
CA2277	MacConkey agar for the isolation of salmonella shigella and coliform bacteria	500g
CP1695	Peptone water (buffered) Acc.to ISO6579 for microbiology	500g
CB0041	Baird-Parker agar staphylococcus selective agar (base) acc. To Baird-Parker for microbiology	500g
CA2328	Agar plate count (PCA) casein-peptone dextrose yeast extract agar for microbiology)	500g
CA2207	Agar bacteriological culture media (purified agar-agar) (Scharlau)	500g



The above is only a sample of what we have available. Please call us to discuss your scientific needs. We also sell a broad range of accessories including loops, plates, gloves etc.

Microbiology

An agar plate or Petri dish is used to provide a growth medium using a mix of agar and other nutrients in which microorganisms, including bacteria and fungi, can be cultured and observed under the microscope. Agar is indigestible for many organisms so that microbial growth does not affect the gel used and it remains stable.

Agar is typically sold commercially as a powder that can be mixed with water and prepared similarly to gelatin before use as a growth medium. Other ingredients are added to the agar to meet the nutritional needs of the microbes. Many specific formulations are available, because some microbes prefer certain environmental conditions over others. Agar is often dispensed using a sterile media dispenser.



BALANCES



METTLER TOLEDO



OHAUS



ROWE CODE	DESCRIPTION
IB0144	Balance Analytical ML204T Newclassic 220g @ 0.1mg with internal calibration and touch screen
IB0145	Balance Precision ML1602T Newclassic 1620g @ 0.01g with internal calibration and touch screen
IB0146	Balance Precision ML3001T Newclassic 3200g @ 0.1g with internal calibration and touch screen

ROWE CODE	DESCRIPTION
IB7706	Balance 600gx0.01g Scout Pro Series
IB7740	Balance 600gx0.1g Scout Pro Series
IB7756	Balance Ohaus 6kg x 1.0g Valor 3000 Xtreme compact scale
IB7766	Balance Ohaus 6000g x 0.1g Scout Pro
IB2112	Balance 2100gx0.01g Pioneer Series with internal calibration

IB0077 HE53 Moisture Analyzer

When moisture matters, METTLER TOLEDO Professional Moisture Analyzers deliver outstanding results.

Designed and manufactured in Switzerland. Innovative heating and predictive result technology. Best in class.

Premium Performance for Best Product Quality

A high performance, 200g capacity MonoBloc weighing cell, innovative hanging weighing pan and up to 0.1mg readability provide best measurement performance. Highly reliable results are generated time after time.



IB2019 MB45 Moisture Analyzer

The Professional's Choice for Analytical Moisture Analysis.

The MB45 has a dot matrix display that supports quick setup and displays % moisture, % solids, % regain, time, temperature, weight, test ID, drying curve & statistics.



MB45 includes a statistical function for simple tracking and recording of standard deviation over time and is available for each procedure in the test library.

Four selectable automatic drying programs support easy one-step drying. A halogen heating element offers an operating temperature range from 50°C to 200°C in 1°C increments.



CENTRIFUGES

CENTRIFUGES & ACCESSORIES

ROWE CODE	DESCRIPTION	PACK SIZE
IC3774	Centrifuge C-28A MAX 6,000rpm without cooling without rotor 208-240V 0/60Hz	ea
IR1003	Rotor 8 place swing out for 50mL Falcon Tubes suits C28 centrifuge	ea
IC4160	Centrifuge multi rotor speed 500-4000rpm 240 Volts 50Hz	ea
IC4101	Centrifuge part reducer to suit IR4126 rotor for 15mL Tubes	4pk
IR4126	Rotor fixed angle 8x50mL	ea

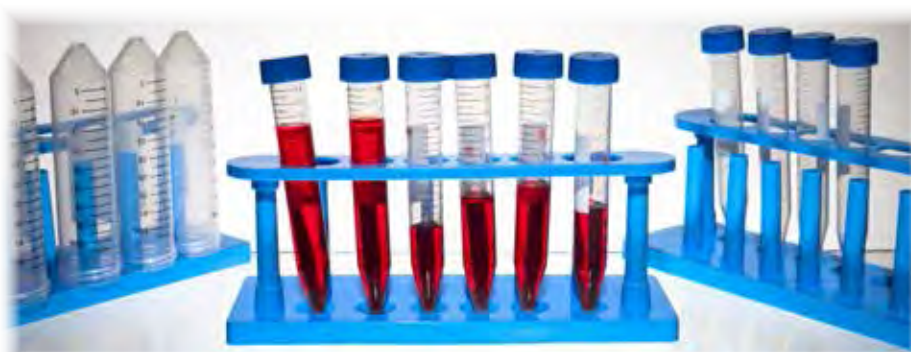
ROWE CODE	DESCRIPTION	PACK SIZE
IC0026	Centrifuge S-8 MAX 6000rpm angle rotor for 8x15mL tubes 208-240v 50/ ea 60Hz	ea

ROWE CODE	DESCRIPTION	PACK SIZE
IC0039	Centrifuge "palm" micro model D1008, maximum speed 7000rpm for eight 0.2/0.5/1.5/2.0mL tubes	ea



CENTRIFUGE TUBES

ROWE CODE	DESCRIPTION	PACK SIZE
PT1669	Tube, microcentrifuge 1.5mL, graduated with conical bottom and hinged lid	500
PT1208	Tube Centrifuge 10mL conical base screw cap natural unlabelled graduated 103mmHX16mmD polypropylene	1000
PT1770	Tube centrifuge 10mL conical base screw cap natural unlabelled graduated 103mmHX16mmD polypropylene	1000
PT1170	Tube centrifuge 50mL sterile conical bottom 115mmHX28mmD polypropylene	500
PT1140	Tube centrifuge 50mL sterile conical bottom 115mmHX30mmD polypropylene (Greiner)	500



CHEMICALS



A

ROWE CODE	DESCRIPTION	PACK SIZE
CA5530	Acetaldehyde LR	500mL
CA0080	Acetaldehyde 1% solution for ascorbic acid analysis	500mL
CA1215	Acetic Acid Glacial AR	2.5L
CA1107	Anti-bumping granules (fused alumina) small 1-3mm	250g
CA2105	Anti-foam Silicone Liquid Technical	500mL
CA4705	Ascorbic Acid (L+) AR	500g



B

ROWE CODE	DESCRIPTION	PACK SIZE
CB2690	Buffer pH 4.00 (colourless) NIST traceable, in contamination proof bottle	500mL
CB0014	Buffer pH 4.00 (colourless)	1L
CB2660	Buffer pH 4.00 (red) solution NIST traceable, in contamination proof bottle	500mL
CB3118	Buffer pH 7.00 (colourless) NIST traceable, in contamination proof bottle	500mL
CB0015	Buffer pH 7.00 (colourless)	1L
CB3115	Buffer pH 7.00 (green) solution NIST traceable, in contamination proof bottle	500mL
CB3515	Buffer pH 10.00 (blue) solution NIST traceable, in contamination proof bottle	500mL



C

ROWE CODE	DESCRIPTION	PACK SIZE
CC1740	Caesium chloride AR	100g
CC1561	Charcoal Activated Powder LR	500g
CC0048	Citric Acid Anhydrous Food Grade, conforms to BP/FCC	500g
KI1550	Clinitest® Tablets for testing sugar in wine	40
KI1555	Clinitest® Tablets for testing sugar in wine	60
KI1560	Clinitest® Tablets for testing sugar in wine	80
CC0082	Copper (II) Sulfate Pentahydrate (AR)	500g
CC5737	Copper (II) Sulphate pentahydrate AR	5kg
CC5851	Copper (II) Sulphate pentahydrate Technical	5kg
CC5785	Copper Sulfate Pentahydrate Food Grade	5kg



D

ROWE CODE	DESCRIPTION	PACK SIZE
CD1240	Decon 90® Detergent	5L
CD1300	Decon Dri® Powder	5kg
CD1430	Detergent Pyroneg Powder	9kg
CD1211	Dichlorophenol (2,6-) indophenol sodium salt	10g
CD2400	Distilled (demin) Water	20L





CHEMICALS

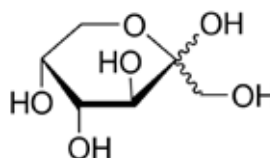
E

ROWE CODE	DESCRIPTION	PACK SIZE
CP1015	pH Electrode Storage Solution	250mL
CF1040	Electrode Cleaning Solution	460mL
CE1665	Ethanol 95% AR (needs licence - plastic container)	2.5L
CE1616	Ethanol Absolute (needs licence - glass container)	2.5L
CE0007	Ethanol Standard 10% ± 1% with certificate	500mL
CE0008	Ethanol Standard 12% ± 1% with certificate	500mL
CE0009	Ethanol Standard 15% ± 1% with certificate	500mL
CE2104	Extran MA 05 Phosphate Free	5L



F

ROWE CODE	DESCRIPTION	PACK SIZE
CF1957	Fehlings A Solution	2.5L
CF1958	Fehlings B Solution	2.5L
CF1995	Fructose (D-) AR	2.5L



FRUCTOSE CHEMICAL ELEMENT

G

ROWE CODE	DESCRIPTION	PACK SIZE
CG1553	Glucose (D-) Anhydrous AR	500g
CG0043	Grease, Silicone, High Vacuum LR Grade	50g

H

ROWE CODE	DESCRIPTION	PACK SIZE
CH1104	Hydrochloric Acid (0.0100 ± 0.0001)M AR (with certificate)	2.5L
CH1115	Hydrochloric Acid (0.100 ± 0.005)M AR standard solution	2.5L
CH1575	Hydrochloric Acid (1.00 ± 0.01)M AR standard solution	5L
CH1569	Hydrochloric Acid (1.00 ± 0.01)M AR standard solution	2.5L
CH1680	Hydrochloric Acid 32% AR	2.5L
CH1893	Hydrochloric Acid 36% AR	2.5L
CH2843	Hydrogen Peroxide 30% AR W/V (100 Volume)	500mL
CH2852	Hydrogen Peroxide 30% AR W/V (100 Volume)	2.5L



MERCK

SIGMA-ALDRICH



CHEMICALS



ROWE CODE	DESCRIPTION	PACK SIZE
FI1101	Indicator Strips pH 0-14 in snap cap tube	100
CI1080	Iodine 0.1N (0.05M) ampoule to make 1L (full range available)	amp
CI1102	Iodine (0.1 +/- 0.001)N (0.05M) solution	2.5L
CI1404	Iso-Octane AR (2,2,4-Trimethylpentane)	500mL
CI1382	Iso-Octane AR (2,2,4-Trimethylpentane)	2.5L



M - N

ROWE CODE	DESCRIPTION	PACK SIZE
CM4705	Malic Acid (L) for synthesis	10g
CM1175	Mercurisorb Kit Mercury Spills Clean Up	ea
CM1801	Metaphosphoric Acid LR	500g
CM2316	Methyl Red Indicator, free acid AR	10g
CM4580	Methylene Blue (CI52015)	25g
CM2312	Mixed Indicator (0.1% Methyl Red + 0.05% Methylene Blue)	100mL
CN1155	Nitric Acid 68%-70% W/W AR	2.5L



P

ROWE CODE	DESCRIPTION	PACK SIZE
CP5253	Phenolphthalein Solution 1% indicator in Propan-2-ol	100mL
CO13125	Phosphoric Acid (Ortho) 25% V/V GLR	5L
CO1312	Phosphoric Acid (Ortho) 25% V/V GLR	20L
CO1317	Phosphoric Acid (Ortho) 85% AR	2.5L
CP2600	Potassium Chloride AR	500g
CP3706	Potassium Hydrogen Phthalate AR	500g
CP3725	Potassium Hydrogen Tartrate AR	500g
CP3950	Potassium Hydroxide Pellets AR	500g
CP4052	Potassium Iodide AR	500g
CP4125	Potassium Iodide AR	5kg
CP4344	Potassium Metabisulfite AR	500g
CP4984	Potassium Sodium (+)-Tartrate AR	5kg
CP4978	Potassium Sodium (+)-Tartrate AR	500g
CP6371	Propan-2-ol (Isopropanol) GLR	2.5L



NEED SPECIAL ADVICE,
MIXTURES OR COMPOUNDS?
WE HAVE QUALIFIED
INDUSTRIAL CHEMISTS WHO
CAN HELP MAKE IT FOR YOU.



CHEMICALS

Q-R

ROWE CODE	DESCRIPTION	PACK SIZE
CQ1050	Quantumclean Laboratory Detergent	5L
CR3011	Rebelein Solution Z1 for determination of reducing sugars	2.5L
CR4010	Rebelein Solution Z2 for determination of reducing sugars	2.5L
CR4020	Rebelein Solution Z3 for determination of reducing sugars	2.5L
CR4030	Rebelein Solution Z4 for determination of reducing sugars	2.5L
CR4040	Rebelein Solution Z5 for determination of reducing sugars	2.5L
CR4050	Rebelein Solution Z6 for determination of reducing sugars	2.5L



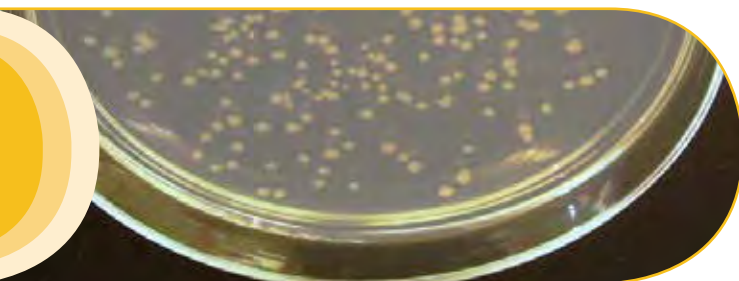
A donation of \$2 goes to the Royal Flying Doctor Service of Australia with every purchase of this product.

S-Z

ROWE CODE	DESCRIPTION	PACK SIZE
CS7482	Silica Gel Self Indicating 2-5mm (orange)	500g
CS7455	Silica Gel Self Indicating Granules 5-10mm mesh (blue)	500g
CS8342	Silver Nitrate 0.1N AR	2.5L
CS1072	Soda Lime Self-Indicating LR	500g
CS14050	Sodium (Tri-) Citrate Dihydrate AR	500g
CS10038	Sodium Carbonate Anhydrous AR	500g
CS10307	Sodium Chloride AR	500g
CS9522	Sodium Hydrogen Carbonate AR	500g
CS1153	Sodium Hydroxide (0.01 ± 0.0005)M standard solution with certificate	1L
CS1152	Sodium Hydroxide (0.01 ± 0.0005)M standard solution with certificate	5L
CS11390	Sodium Hydroxide (0.10 ± 0.0005)M AR standard solution	2.5L
CS11520	Sodium Hydroxide (0.10 ± 0.0005)M AR standard solution	1L
CS12045	Sodium Hydroxide (1.00 ± 0.0005)M AR standard solution	1L
CS0962	Sodium Hydroxide (1.00 ± 0.0005)M AR standard solution	2.5L
CS11765	Sodium Hydroxide (1.00 ± 0.005)M AR Standard solution with certificate	5L
CS1189	Sodium Hydroxide 0.1M (0.1N) Titrisol to make 1L	ampoule
CS11672	Sodium Hydroxide 1.000M (1.000N) Titrisol to make 1L	ampoule
CS12014	Sodium Hydroxide Pellets AR	5kg
CS12005	Sodium Hydroxide Pellets AR (less than 10ppm SiO ₂)	500g
CS1166	Sodium Hydroxide Solution (0.333 ± 0.0005)N AR	2.5L
CS1167	Sodium Hydroxide Solution (0.333 ± 0.0005)N AR	5L
CS12341	Sodium Hypochlorite 12.5% (liquid chlorine)	20L
CS9055	Sodium Metabisulfite Anhydrous AR	500g
CS13845	Sodium Nitrate 1000ppm standard solution	500mL
CS14190	Sodium Thiosulphate 0.1M (0.1N) to make 1L	ampoule
CS14165	Sodium Thiosulphate 0.1N	5L
CS14251	Sodium Thiosulphate Pentahydrate AR	500g
CS1760	Sucrose AR	500g
CS1443	Sulphuric Acid 98% GR for Analysis AR (glass)	2.5L
CT1000	Tartaric Acid AR	500g
CS1815	Starch Indicator for Iodometry	250g
CV1050	Vitex (iodine indicator)	250g
CD2400	Water distilled (demin.)	20L

**Is what
you're after
not shown?
Call us.
We either
have it or
will find it
for you.**

COLONY COUNTER



Rowe code IC0071

Stuart Colony Counter - SC6PLUS

- Pressure sensitive counting
- Average count facility
- Bright white energy saving LED lighting
- With BioCote antimicrobial protection
- Audible count confirmation
- Choice of light or dark background
- Connectivity to printer or computer

Touch pressure with felt tip marker on petri dish registers cumulative count on the digital display with confirmation audible tone (can be on or off). The pressure required to register a count can be adjusted to suit each user. Averaging facility calculates average count over multiple plates. Counting results as well as statistics including SD can be sent directly to the accessory printer or a computer via a USB cable supplied. Sub-stage illumination by low energy bright LED's allows glare-free optimum viewing. A switchable black background is provided to enhance viewing of translucent and difficult to see colonies. Supplied with two Wolffhuegel graticules and dish centering adapters to facilitate use with 50mm to 90mm dishes. Magnifiers and printers are available as optional accessories.

ENZYMES



ROWE CODE	DESCRIPTION	PACK SIZE
KG1000	D-Glucose/d-Fructose enzyme test kit	kit
KS1000	Sucrose D-Glucose/D-Fructose enzyme kit	kit
KL2000	L-Lactic acid enzyme kit	kit
KA2000	Acetic acid enzyme kit	kit
KC3000	Citric acid enzyme kit	kit
KM2000	L-Malic acid enzyme test kit	kit



Food and feed test kits for quality control

The R-Biopharm test kits are used globally for quality control in the entire food production chain, from raw material monitoring to end product testing. Food testing laboratories in the industry as well as commercial testing laboratories and official control laboratories have recognized the value of using high quality test kits for quality control.

***The r-biopharm range of Allergens Kit are also available.
We also carry other ranges.***



FILTRATION

FILTERS - PAPER

ROWE CODE	DESCRIPTION	PACK SIZE
FF1100	Paper Filter 7.0cm similar to GR1 (MN615)	100
FF1150	Paper Filter 9.0cm similar to GR1 (MN615)	100
FF1200	Paper Filter 11.0cm similar to GR1 (MN615)	100
FF2127	Paper Filter 11.0cm Whatman® 5	100
FF2389	Paper Filter 11.0cm similar to GR5 (MN619)	100
FF1300	Paper Filter 12.5cm similar to GR1 (MN615)	100
FF1450	Paper Filter 15.0cm similar to GR1	100
FF2300	Paper Filter 15.0cm Whatman® 5	100
FF2401	Paper Filter 15.0cm similar to GR5 (MN619DE)	100



Over 200 types or sizes in stock.

GLASS FIBRE PRE-FILTERS

ROWE CODE	DESCRIPTION	PACK SIZE
FF4627	Paper Filter Glass Fibre 4.7cm similar to GR GF/A (MNGF-1)	100
FF4128	Paper Filter Glass Fibre 4.7cm similar to GR GF/C (MN GF-3)	100
FF4680	Paper Filter Glass Fibre 4.7cm similar to GR GF/D (MN GF-4)	100
FF4629	Paper Filter Glass Fibre 4.7cm similar to GF/D (GD120)	50
FF4585	Paper Filter Glass Fibre 4.7cm (DP70)	50



MEMBRANE FILTERS

ROWE CODE	DESCRIPTION	PACK SIZE
FF5011	Filter Membrane 13mm 0.8 micron mixed cellulose white gridded	100
FF4336	Filter Membrane 13mm 0.47 micron "black" gridded and sterile mixed cellulose esters	100
FF5251	Filter Membrane 25mm 0.45 micron gridded mixed cellulose esters	100
FF0002	Filter Membrane 25mm 0.45 micron white membrane black gridded mixed cellulose ester	200
FF4246	Membrane Filter 47mm 0.45 micron cellulose nitrate sterile white with black grid	100
FF4254	Membrane Filter 47mm 0.45 micron mixed esters cellulose sterile white gridded	600
FF4337	Filter Membrane 47mm 0.45 micron "black" gridded and sterile mixed cellulose esters	600

SYRINGE FILTERS & STERIFIL CUPS

ROWE CODE	DESCRIPTION	PACK SIZE
FF7502	Filter Syringe 30mm 0.22 micron acetate cameo 30A	50
FF7514	Filter Syringe 30mm 0.45 micron acetate cameo 30A	50
FF7528	Filter Syringe 33mm 0.45 micron PVDF membrane Millex-HV	1000
FF7557	Filter Syringe 30mm 0.45 micron PES with glass fibre pre-filter	1000
FF3298	Filter Syringe 33mm 0.45 micron PES membrane Millex-HP	1000
PF1174	Filter Holder Sterifil® Funnel 500mL 47mm	ea



The products on this page are only a sample of our range - contact your local office to learn more.



Try something different today - call us for a sample.

GLASSWARE

BEAKERS



ROWE CODE	DESCRIPTION	PACK SIZE
GB1660	Beaker Low Form Spouted Graduated 50mL Borosilicate Glass	10
GB1810	Beaker Low Form Spouted Graduated 100mL Borosilicate Glass	10
GB2060	Beaker Low Form Spouted Graduated 250mL Borosilicate Glass	10
GB2310	Beaker Low Form Spouted Graduated 600mL Borosilicate Glass	ea
GB2610	Beaker Low Form Spouted Graduated 1L Borosilicate Glass	ea
GB2810	Beaker Low Form Spouted Graduated 2L Borosilicate Glass	ea
GB3210	Beaker Tall Form Spouted Graduated 100mL Borosilicate Glass	ea

Tall or low form - we have them.

BOTTLES - LABORATORY

ROWE CODE	DESCRIPTION	PACK SIZE
GB7910	Bottle Laboratory with Blue Screw Cap 100mL Borosilicate Glass	10
GB7955	Bottle Laboratory with Blue Screw Cap 250mL Borosilicate Glass	10
GB8005	Bottle Laboratory with Blue Screw Cap 500mL Borosilicate Glass	10
GB8055	Bottle Laboratory with Blue Screw Cap 1L Borosilicate Glass	ea
GB8105	Bottle Laboratory with Blue Screw Cap 2L Borosilicate Glass	ea
GB8315	Bottle Medicinal 100mL Clear Glass with 24mm White Poly Cap	128
GB8321	Bottle Medicinal 200mL Clear Glass with 24mm White Poly Cap	80

SIMAX



CARBODOSEUR (CO2 MEASUREMENT)

ROWE CODE	DESCRIPTION	PACK SIZE
GC2699	Carbodoseur, Modified 100mL Measuring Cylinder with 24/29 Socket and GL14 Opening and 7mm OD Glass Tube	ea

CYLINDER MEASURING - GLASS BASES



ROWE CODE	DESCRIPTION	PACK SIZE
GC1107	Cylinder Measuring 'A' Class Tall Form Spouted 50mL Glass with Hexagonal Base	ea
GC1166	Cylinder Measuring 'A' Class Tall Form Spouted 100mL Glass with Hexagonal Base	ea
GC1208	Cylinder Measuring 'A' Class Tall Form Spouted 250mL Glass with Hexagonal Base	ea
GC1276	Cylinder Measuring 'A' Class Tall Form Spouted 500mL Glass with Hexagonal Base	ea
GC1286	Cylinder Measuring 'A' Class Tall Form Spouted 1L Glass with Hexagonal Base	ea

GLASSWARE

CYLINDER MEASURING - PLASTIC BASES

ROWE CODE	DESCRIPTION	PACK SIZE
GC9004	Cylinder Measuring Tall Form Spouted 50mL Glass with Red Polypropylene Base	ea
GC9005	Cylinder Measuring Tall Form Spouted 100mL Glass with Orange Polypropylene Base	ea
GC9006	Cylinder Measuring Tall Form Spouted 250mL Glass with Yellow Polypropylene Base	ea
GC9007	Cylinder Measuring Tall Form Spouted 500mL Glass with Light Blue Polypropylene Base	ea
GC9008	Cylinder Measuring Tall Form Spouted 1L Glass with Purple Polypropylene Base	ea



CYLINDER MEASURING - PLASTIC BASES WITH STOPPER

ROWE CODE	DESCRIPTION	PACK SIZE
GM9002	Cylinder Measuring 50mL Polyethylene Stopper & Red Polypropylene Base Blue Graduations Glass	ea
GC9010	Cylinder Measuring 100mL Polyethylene Stopper & Polypropylene Base Blue Graduations Glass	ea
GC9011	Cylinder Measuring 250mL Polyethylene Stopper & Yellow Polypropylene Base Blue Graduations Glass	ea
GC9012	Cylinder Measuring 500mL Polyethylene Stopper & Polypropylene Base Blue Graduations Glass	ea
GC9013	Cylinder Measuring 1L Polyethylene Stopper & With Purple Polypropylene base Blue Graduations Glass	ea



FLASKS - ERLLENMEYER/FILTER

ROWE CODE	DESCRIPTION	PACK SIZE
GF1710	Flask Erlenmeyer Narrow Neck Rimmed 100mL Borosilicate Glass	10
GF1855	Flask Erlenmeyer Narrow Neck Rimmed 250mL Borosilicate Glass	10
GF2805	Flask Erlenmeyer Wide Neck Rimmed 250mL Borosilicate Glass	10
GF2010	Flask Erlenmeyer Narrow Neck Rimmed 500mL Borosilicate Glass	10
GF2160	Flask Erlenmeyer Narrow Neck Rimmed 1L Borosilicate Glass	ea
GF2215	Flask Erlenmeyer Narrow Neck Rimmed 2L Borosilicate Glass	ea
GF3162	Flask Filter 250mL Borosilicate Neck ID Approx 34mm with 10mm Side Arm Vacuum	ea
GF3263	Flask Filter 500mL Borosilicate Neck ID Approx 34mm with 10mm Side Arm Vacuum	ea
GF3343	Flask Filter 1L Borosilicate Neck ID Approx 45mm with 10mm Side Arm Vacuum	ea
GQ1130	Flask Erlenmeyer 250mL 24/29 Socket (Flask for Kipps/Tilt Measure)	ea
DL8210	Tilt/Kipps Measure 10mL	ea
DL8200	Tilt/Kipps Measure 5mL	ea



GLASSWARE



FLASKS - VOLUMETRIC

ROWE CODE	DESCRIPTION	PACK SIZE
GF9004	Flask 50mLVolumetric 'A' Class Blue Graduations with Plastic Stopper Neck 12/21 Borosilicate Glass	ea
GF9006	Flask 100mLVolumetric 'A' Class Blue Graduations with Plastic Stopper Neck 12/21 Borosilicate Glass	ea
GF9007	Flask 250mLVolumetric 'A' Class Blue Graduations with Plastic Stopper Neck 14/23 Borosilicate Glass	ea
GF9008	Flask 500mLVolumetric 'A' Class Blue Graduations with Plastic Stopper Neck 19/26 Borosilicate Glass	ea
GF9009	Flask 1L Volumetric 'A' Class Blue Graduations with Plastic Stopper Neck 24/29 Borosilicate Glass	ea
GF9011	Flask 2L Volumetric 'A' Class Blue Graduations with Plastic Stopper Neck 29/32 Borosilicate Glass	ea



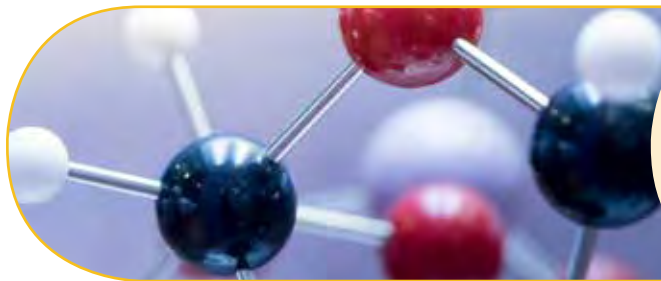
PIPETTES - GRADUATED

ROWE CODE	DESCRIPTION	PACK SIZE
GP9001	Pipette Graduated 'AS' Grade 1mL with 0.01mL Graduations	ea
GP9002	Pipette Graduated 'AS' Grade 2mL with 0.02mL Graduations	ea
GP9003	Pipette Graduated 'AS' Grade 5mL with 0.05mL Graduations	ea
GP9005	Pipette Graduated 'AS' Grade 10mL with 0.1mL Graduations	ea
GP2052	Pipette Graduated 'AS' Grade 25mL with 0.1mL Graduations	ea

PIPETTES - VOLUMETRIC

ROWE CODE	DESCRIPTION	PACK SIZE
GP9010	Pipette Volumetric 'AS' Grade 1mL	12
GP9011	Pipette Volumetric 'AS' Grade 2mL	12
GP9014	Pipette Volumetric 'AS' Grade 5mL	12
GP9015	Pipette Volumetric 'AS' Grade 10mL	6
GP9017	Pipette Volumetric 'AS' Grade 20mL	6
GP9008	Pipette Volumetric 'AS' Grade 25mL	6
GP9020	Pipette Volumetric 'AS' Grade 50mL	6





HEATING MANTLES

IH1170

Electrothermal 500ml Heating and Stirring Electromantle (230V) / EMA0500/CEB

The EMA0500/CEB Electromantle shares all the features of the standard EM Electromantle, but has the added functionality of magnetic stirring. The solid state stirring circuitry is built into the base of the main housing and provides powerful stirring over a range of capacities and viscosities. The stir bar is seldom lost due to an "auto-recapture" function.

Magnetic Stirring

The EMA Electromantle Stirring operation is simply achieved by placing the correct size stir bar into the flask, turning the stir control to the minimum speed and ramping up slowly. If the magnetic coupling to the stir bar is lost for any reason, the stir speed control should be reduced slightly and the auto-recapture switch can be activated.

Key Features

- Accepts 500ml round bottom flasks
- Bi-directional stirring speeds up to 520rpm
- Stir bar "auto-recapture" function
- Unique ventilation keeps outer casing cool
- Maximum element temperature 450°C
- Built-in energy regulator
- Replaceable insulated heater cartridge
- Indicator lamps for power and heater operation
- A chemically resistant polypropylene outer casing
- A grounded earth screen and double fuses for extra safety
- Clamp for 1.3cm support rod (but not including the support rod)



IH1170

IH1190

Electrothermal 500ml Electromantle Heating Mantle (230V)

The EM0500/CE Electromantle has a durable, chemically resistant polypropylene outer housing that minimises damage from spills. It allows for maximum heat transfer with minimal risk of flask breakage.

Designed with flexibility and ease of use in mind, the EM0500/CE Electromantle is a reliable workhorse for your heating applications in the laboratory. All EM Electromantles have a built-in energy regulator with indicator lamps for power and heater operation. All mantles have support rod clamps as an integral feature and incorporate a grounded earth screen and double fuses for added safety.

Key Features

- Use with 500ml round bottom flasks
- Unique ventilation keeps outer casing cool
- Maximum element temperature 450°C
- Built-in energy regulator
- Replaceable insulated heater cartridge
- Indicator lamps for power and heater operation
- A chemically resistant polypropylene outer casing
- A grounded earth screen and double fuses for extra safety
- Supplied with clamp for 1.3cm diameter support rod (but not including support rod)



IH1190

IH12420

Electrothermal 250ml V-shaped Heating Electromantle (230V) / EMV0250/CE

The EMV0250/CE V-shaped Electromantle may accommodate 60° funnels, pear-shaped or round bottom flasks up to a capacity of 250ml. The stainless steel earth screen covers the heater element to protect you from shock hazards due to spills or flask breakage.

Key Features of EMV V-shaped models

- Bottom opening accommodates round bottom and pear-shaped flasks and 60° funnels of various diameters
- Capacity between 100ml to 250ml
- Coiled heating element, suspended within a thermal insulating cartridge, provides maximum heat transfer and support
- Unique ventilation keeps outer casing cool
- Maximum element temperature 450°C
- Built-in energy regulator
- Replaceable insulated heater cartridge
- Indicator lamps for power and heater operation
- Chemically resistant polypropylene outer casing
- Grounded earth screen and double fuses for added safety
- Clamp for 1.3cm support rod (but not



IH12420

We have a range of varying capacity and sizes to choose from. Call our office or view online at www.rowe.com.au



KJELDAHL SYSTEMS



1. Recirculating Water Pump - JP

Recirculating Water Pump that ensures optimum aspiration depending on the digestion phases and the number of samples placed in the digester connected to the pump.

Rowe code: IP2050

2. Scrubber - SMS

Designed to neutralize corrosive and toxic fumes produced during oxidative mineralizations or similar processes.

Rowe code: IS5100

3. Kjeldahl Digestion Units - DKL & DK Series

Both automatic and manual Kjeldahl Digestion Units for nitrogen analysis and protein determination that incorporate the revolutionary TEMS™ technology for unprecedented Savings in terms of Time, Energy - as much as 35%, Money and Space.

NOTE: Digesters available in DK series without automatic lift. Read more about some of the range below.



DKL 8 (8-position with 250 ml tubes, Ø 42 mm)
Rowe Code: ID0070



DKL 12 (12-position with 250/400 ml tubes, Ø 42 mm)
Rowe Code: ID0069



DKL 20 (20-position with 250/400 ml tubes, Ø 42 mm)
Rowe Code: ID1704



DK20 (Digester Heating 42-place with temperature ramp DK42/26)
Rowe Code: ID1715

High Technology

- Microprocessor precise control of block temperature
- Real time display of process steps
- 54 programs (30 pre-installed, 24 customizable)

Automated Operation

- Calibration automatic for top precision & repeatability
- No hands lowering and lifting of test tubes
- Auto separation of manifold from the rack

Outstanding Reliability

- Aluminum block for absolute temperature homogeneity
- Unmatched conductivity for fast response up to 450 °C
- Conforms to Good Laboratory Practice standard
- Premium quality consumables

Practical Functionality

- LCD display for immediate understanding
- Up to 6 languages available from a wide selection
- All necessary items supplied in one package
- Very small footprint



KJELDAHL SYSTEMS

Modern Kjeldahl apparatus (UDK159 & 169) combines distillation and titration in one automated method.

VELP Scientifica has developed the widest range of Kjeldahl apparatus consisting of digestion units (traditional or automatic models) and four distillation units with multiple innovations and features that distinguish them from conventional instruments, to respond to the different needs in R&D, QC and QA laboratories of today.

VELP Scientifica Kjeldahl apparatus have been designed to maximize automation, liberating laboratory staff and providing the best conditions for reproducible results. In addition to the objectives for improving the Kjeldahl analysis, substantial effort has been invested in creating eco-friendly equipment – eco in terms of ecology, and also in terms of economy.



UDK 129 Kjeldahl Distillation Unit

Entry-level unit with the same technology as our top of the range instrument. Runs automatically after setting sodium hydroxide addition and distillation time.

Rowe Code: ID8000

Applications include determining ammoniacal nitrogen, protein determination, nitrogen content (Kjeldahl or direct alkaline distillation), nitric nitrogen (after reduction/Devarda), phenols, volatile acids, cyanides and alcohol content.



UDK 139 Semi-Automatic Kjeldahl Distillation Unit

Same patented steam generator and titanium condenser as our top of the range instrument. Runs automatically after setting distillation time, water and sodium hydroxide addition, and steam generation output.

Rowe Code: ID8025



UDK 149 Automatic Kjeldahl Distillation Unit

All the features listed with previous units, can be connected to different automatic titrators and connects to printer or PC. Memory for 20 customizable methods. Runs automatically after setting distillation time, water, boric acid and sodium hydroxide addition, and steam generation output.

Rowe Code: ID8050



UDK 159 Automatic Kjeldahl Analyzer

All the features listed with previous units, with integrated colourimetric titrator (AOAC recommended) and automatic titration vessel cleaning. Has a 55 program library and comprehensive reporting system. Delivers shorter analysis time, is maintenance-free and has no need for frequent calibration.

Rowe Code: ID8075

UDK 169 Automatic Kjeldahl Analyzer with AutoKjel Autosampler

Fully automatic Kjeldahl Analyzer (distillation unit plus integrated colorimetric titrator) with connection to autosampler, for high sample throughput, maximum flexibility and unattended operation.

The UDK 169 is the extremely innovative, intuitive and simple solution for Kjeldahl nitrogen/protein determination at the same time. It can be used as stand-alone or combined with the AutoKjel autosampler for unattended operation and automatic processing of up to 24 samples. The best configuration when high productivity is needed.

Rowe Code: ID8169



LIQUID HANDLING



DISPENSERS

ROWE CODE	DESCRIPTION	PACK SIZE
DD1177	Dispenser Labmax® 1-5mL airless suitable for acids (not HF) and solvents	ea
DD1171	Dispenser Labmax® 1-10mL airless suitable for acids (not HF) and solvents	ea
DD1178	Dispenser Labmax® 10-50mL airless suitable for acids (not HF) and solvents	ea



RAININ™ LTS SHAFT PIPETTORS & TIPS

ROWE CODE	DESCRIPTION	PACK SIZE
DP4954	Pipettor Rainin™ 10-100µL Pipet-Lite L-100XLS+ with RFID and LTS Shaft	ea
IP0011	Pipettor Rainin™ 20-200µL Pipet-Lite L-200XLS+ with RFID and LTS Shaft	ea
DT4945	Tip Pipette Rainin™ LTS 20-200µL RC-L250 Bulk Pack	1,000
IP0007	Pipettor Rainin™ 100-1000µL Pipet-Lite L-1000XLS+ with RFID and LTS Shaft	ea
DL3037	Tip Pipette Rainin™ LTS 100-1000µL RC-L1000 Bulk Pack	1,000
DP4978	Pipettor Rainin™ 500-5000µL Pipet-Lite L-5000XLS with RFID and LTS Shaft	ea
DT4912	Tip Pipette Rainin™ LTS 500-5000µL RC-L5000 Bulk Pack	1,000
DP4979	Pipettor Rainin™ 1-10mL Pipet-Lite L-10MLXLS with LTS Shaft	ea
DT4913	Tip Pipette Rainin™ LTS 1-10mL RC-L10mL	200
DT4901	Pipettor Rainin™ 2-20ml Pipet-Lite with LTS Shaft	ea
DT4911	Tip Pipette Rainin™ LTS 2-20mL RC-L20mL	100

RAININ Pipet-Lite

AVAILABLE IN:

XLS - Traditional pipetting.

LTS - Cylindrical tip and shaft for low force pipetting.



- The World's first pipette family to be equipped with Radio Frequency Identification Device (RFID) tags for advanced calibration tracking.

- Choose the Lite-Touch pipetting system (LTS) to dramatically reduce the repetitive stress of tip ejection.

- Dry seal system - No greasing required

RAININ™ STANDARD SHAFT PIPETTORS & TIPS

ROWE CODE	DESCRIPTION	PACK SIZE
IP0019	Pipettor Rainin™ 10-100µL Pipet-Lite XLS SL-100XLS+	ea
IP0023	Pipettor Rainin™ 20-200µL Pipet-Lite XLS SL-200XLS+	ea
DT4904	Tips to Suit Standard Shaft Rainin™ 200µL Pipettors	1,000
IP0018	Pipettor Rainin™ 100-1000µL Pipet-Lite XLS SL-1000XLS+	ea
DL4914	Tip Pipette Rainin™ Universal 100-1000µL RC-100	1,000
DP4906	Pipettor 500-5000µL Pipet-Lite Universal Fit	ea
DL4938	Tip Pipette Rainin™ Universal 500-5000µL RC-5000	1,000
DP4928	Pipettor Rainin™ 1-10mL Pipet-Lite SL-10ML XLS	ea
DT4935	Tip Pipette Rainin™ Universal 1-10mL RC-10mL	200



LIQUID HANDLING

PIPETTORS - ECONOMIC RANGE

ROWE CODE	DESCRIPTION	PACK SIZE
IP0073	Pipettor Rainin® 10-100µL Pipet-Lite Research SL-100	ea
IP0079	Pipettor Rainin® 20-200µL Pipet-Lite Research SL-200	ea
DP0031	Pipettor Rainin® 100-1000µL Pipet-Lite Research SL-1000	ea
DP0032	Pipettor Rainin® 500-5000µL Pipet-Lite Research SL-5000	ea
IP0081	Pipettor Rainin® 1mL-10mL Pipet-Lite Research SL-10mL	ea



Accurate and precise
Magnetic Assit helps locate and hold the zero position before aspiration.



Ergonomic design
Optimal handling comfort for long pipetting days



Reduced thumb impact
Silicone shock absorber reduces impact



RAININ
Pipet-Lite
Research

PASTEUR PIPETTES

ROWE CODE	DESCRIPTION	PACK SIZE
GP2520	Pipette Pasteur 145mm Long Glass	1,000
GP2660	Pipette Pasteur 230mm Long Glass	1,000
PP1914	Pipette Pasteur Graduated to 1mL 5mL Capacity	500
PP2102	Pipette Pasteur Graduated to 3mL in 0.5mL Divisions 7mL Capacity	500



PIPETTE TIPS

ROWE CODE	DESCRIPTION	PACK SIZE
DL3050	Tips 100-1000µL blue disposable (Kartell®)	1,000
DL3000	Tips 2-200µL yellow disposable (Kartell®)	1,000
DL3055	Tips 1-5mL 964 suits Boeco® & Biohit® plus 126mm Long	100
DL3004	Pipette Tips Eppendorf® to suit 2-200µL Pipettor	1,000
DL3960	Pipette Tips Eppendorf® to suit 1mL Pipettor	1,000
DL3975	Tips 5mL to suit Eppendorf®	500
DL3007	Tip Pipette 165mm 1-10mL Eppendorf® Plastic	200
DL3940	Tip, Pipette Yellow Graduated to suit Eppendorf®, Gilson®, Finnpiquette®, Rainin®, Biohit® (Boeco) 200µL Tarsons®	1,000
DL3959	Tip, Pipette Clear Graduated to suit Eppendorf®, Gilson®, Finnpiquette®, Boeco®, Witeg® 1000µL Tarsons®	500
DL3974	Tip, Pipette Clear Graduated to suit Eppendorf® 5mL Tarsons®	250
DL3907	Tip, Pipette Clear Graduated to suit Eppendorf®, Gilson® 10mL Tarsons®	100
DT0005	Tip, Pipette Clear To Suit Rainin®, Gilson® 5mL Tarsons®	250

TARSONS



BOECO Germany **BIOHIT**

eppendorf
BRAND **Finnpiquette®**

GILSON **witeg**

Let us find you the most economically priced tip to suit your pipettor.

Kartell LABWARE

OVENS



INCUCELL®

ROWE CODE	DESCRIPTION	UNIT
I10030	Incubator, natural air convection "Incucell® 22R", ambient +5°C up to 99.9°C, volume 22L, I.D. 240mmWx320mmDx290mmH O.D. 405mmWx610mmDx580mmH	ea
I10031	Incubator natural air convection Incucell® 55R ambient +5°C up to 99.9°C volume 55L I.D. 400mmWx370mmDx350mmH O.D. 620mmWx590mmDx680mmH	ea
I10032	Incubator with natural air convection Incucell® 111R ambient +5°C up to 99.9°C volume 111L I.D. 540mmWx370mmDx530mmH O.D. 760mmWx590mmDx860mmH	ea
I10033	Incubator with natural air convection Incucell® 222R ambient +5°C up to 99.9°C VOLUME 222L I.D. 540mmWx520mmDx760mmH O.D. 760mmWx740mmDx1100mmH	ea
I10034	Incubator forced air convection Incucell® V22R ambient +10°C up to 99.9°C volume 22L I.D. 240mmWx320mmDx290mmH O.D. 405mmWx610mmDx580mmH	ea
I10035	Incubator forced air convection Incucell® V55R ambient +10°C up to 99.9°C volume 55L I.D. 400mmWx370mmDx350mmH O.D. 620mmWx590mmDx680mmH	ea
I10036	Incubator with forced air convection Incucell® V111R ambient +10°C up to 99.9°C volume 111L I.D. 540mmWx370mmDx530mmH O.D. 620mmWx590mmDx680mmH	ea
I10037	Incubator with forced air convection Incucell® V111 comfort ambient +10°C UP TO 99.9°C volume 111L I.D. 540mmWx370mmDx530mmH O.D. 620mmWx590mmDx680mmH	ea

VENTICELL®

ROWE CODE	DESCRIPTION	UNIT
IO0061	Oven forced air convection "Venticell® 22R", ambient +10°C up to 250°C	ea
IO0062	Oven forced air convection "Venticell® 55R", ambient +10°C up to 250°C	ea
IO0063	Oven forced air convection "Venticell® 111R", ambient +10°C up to 250°C	ea
IO0064	Oven forced air convection "Venticell® 222R", ambient +10°C up to 250°C	ea



Inside the Incucell® - stainless steel interior





PLASTICWARE

BEAKERS

ROWE CODE	DESCRIPTION	PACK SIZE
PB3850	Beaker 50mL Low Form Polypropylene	ea
PB3855	Beaker 50mL Polypropylene	ea
PB3950	Beaker 100mL Low Form Polypropylene	ea
PB3955	Beaker 100mL Polypropylene	ea
PB4000	Beaker 250mL Low Form Polypropylene	ea
PB4002	Beaker 250mL Polypropylene	ea
PB4100	Beaker 500mL Low Form Polypropylene	ea
PB4102	Beaker 500mL Polypropylene	ea
PB4200	Beaker 1L Low Form Polypropylene	ea
PB4202	Beaker 1L Polypropylene	ea



TARSONS

BOTTLES - WASH

ROWE CODE	DESCRIPTION	PACK SIZE
PW1000	Bottle Wash 250mL Polyethylene with Integral side spout tube dispensing tip & closure cap	ea
PW1810	Bottle Wash Round 250mL Plastic	ea
PW2310	Bottle Wash Wide Mouth 250mL LDPE/PP Closure	ea
PW1200	Bottle Wash 500mL Polyethylene with integral side spout tube dispensing tip & closure cap	ea
PW1302	Bottle Wash Integral Tube 500mL LDPE/PP Closure	ea
PW2225	Bottle Wash Round 500mL Plastic	ea
PW2445	Bottle Wash "Methanol" Safety Labelled & Vented, Green Cap, 500mL LDPE	ea
PW1378	Bottle Wash "Ethanol" Safety Labelled & Vented, Natural Cap, 500mL LDPE	ea
PW1406	Bottle Wash "Distilled Water" Safety Labelled & Vented, Natural Cap, 500mL LDPE	ea
PW2365	Bottle Wash Wide Mouth 500mL LDPE/PP Closure	ea
PW2380	Bottle Wash Wide Mouth 1000mL LDPE/PP Closure	ea

CUVETTES

ROWE CODE	DESCRIPTION	PACK SIZE
PC3750	Cuvette Disposable 4.5mL 10mm Visible	100
PC3770	Cuvette Disposable 4.5mL 10mm UV	100
PC3740	Cuvette Disposable semi micro low form 1.5mL 10mm visible	100
PC3758	Cuvette Disposable 4.5mL 10mm visible PS	100
GC1116	Cell 10mm P.L. UV Quartz Type 1, 170-2700nm	ea
PS2550	Stirring Rod for cuvettes polystyrene 90mm Long	100



CYLINDERS

ROWE CODE	DESCRIPTION	PACK SIZE
PM1850	Cylinder Measuring 50mL Tall Form Polypropylene	ea
PM1050	Cylinder Measuring 50mL Tall Form TPX	ea
PM1900	Cylinder Measuring 100mL Tall Form Polypropylene	ea
PM1100	Cylinder Measuring 100mL Tall Form TPX	ea

**Cylinders
continued on
next page**

PLASTICWARE



CYLINDERS - CONTINUED

ROWE CODE	DESCRIPTION	PACK SIZE
PM1950	Cylinder Measuring 250mL Tall Form Polypropylene	ea
PM1150	Cylinder Measuring 250mL Tall Form TPX	ea
PM2000	Cylinder Measuring 500mL Tall Form Polypropylene	ea
PM1200	Cylinder Measuring 500mL Tall Form TPX	ea
PM2050	Cylinder Measuring 1L Tall Form Polypropylene	ea
PM1250	Cylinder Measuring 1L Tall Form TPX	ea



JUGS

ROWE CODE	DESCRIPTION	PACK SIZE
PJ1105	Jug 500mL Polypropylene	ea
PJ1157	Jug 1L Polypropylene	ea
PJ1205	Jug 2L Polypropylene	ea
PJ1250	Jug 3L Polypropylene	ea
PJ1305	Jug 5L Polypropylene	ea



PIPETTE HOLDERS & WASHERS

ROWE CODE	DESCRIPTION	PACK SIZE
PP1600	Pipette Stand Only (no base) to Suit PP1650	ea
PP1650	Pipette Stand Base Only (no stand) includes PVC rod to suit PP1600	ea
PP1660	Pipette Stand Rotary 94-Place	ea
PP1700	Pipette Holder 16 Position 200x75x150mm	ea
PP1310	Pipette Washer Automatic 990mm (height)	ea
PP1300	Pipette Basket 300mm (total height) 650x130mm diameter	ea



PIPETTE - SEROLOGICAL

ROWE CODE	DESCRIPTION	PACK SIZE
PP0007	Pipette serological 1mL x 0.01mL divisions PS disposable gamma sterile individually wrapped (peel-pack) 25 pieces/bag 40 bags/box	ea
PP0019	Pipette serological 1mL x 0.01mL divisions bulk polystyrene disposable gamma sterile inner polybag of 25 40 bags/box	ea
PP0005	Pipette serological 25ml x 0.2mL divisions PS disposable gamma sterile individually wrapped (peel-pack) 25 pieces/bag 8 bags/box	ea
PP1405	Pipette serological 10ml x 0.1mL divisions (graduated from 0.0ml at top to 9.0ml at bottom) polystyrene gamma sterile individually wrapped (peel-pack) 50 pieces/bag 4 bags/box	ea
PP0022	Pipette serological 10ml x 0.1mL divisions bulk polystyrene disposable gamma sterile inner polybag of 25 14 bags/box	ea
PP0004	Pipette serological 10ml x 0.1mL divisions (graduated from 10.0mL at top to 1.0mL at bottom) PS disposable gamma sterile individually wrapped (peel-pack) 25 pieces/bag 8 bags/box	ea
PP0002	Pipette serological 2ml x 0.01mL divisions PS disposable gamma sterile individually wrapped (peel-pack) 25 pieces/bag 32 bags/box	ea
PP0006	Pipette serological 50ml x 1.0mL divisions PS disposable gamma sterile individually wrapped (peel-pack) 25 pieces/bag 4 bags/box	ea
PP0021	Pipette serological 5mL x 0.1mL divisions, bulk, polystyrene, disposable	ea
PP0003	Pipette serological 5mL x 0.1mL divisions PS disposable gamma sterile	ea



Call us today for a free sample.



PLASTICWARE

PETRI DISHES, CENTRIFUGE TUBES & CONTAINERS

ROWE CODE	DESCRIPTION	PACK SIZE
PP1194	Dish Petri Gamma Sterile Vented 60mm Polystyrene	1000
PP1123	Dish Petri Gamma Sterile Vented 90mm Polystyrene	600
PV1585	Container 70mL with Cap 44mmHX57mmD Polypropylene	550
PC1010	Container 120mL with Cap 108mmHX44mmD Polystyrene	300
PV1630	Container 250mL with Cap 100mmHX65mmD Polystyrene	147
PT1680	Tube 10mL Flat Bottom Screw Cap Natural Unlabelled 97mmHX16mmD Polystyrene	1000
PT1669	Tube, Microcentrifuge 1.5mL, Graduated with Conical Bottom and Hinged Lid	500
PT1208	Tube Centrifuge 10mL Conical Base Screw Cap Natural Unlabelled Graduated 103mmHX16mmD Polypropylene	1000
PT1770	Tube Centrifuge 10mL Conical Base Screw Cap Natural Unlabelled Graduated 103mmHX16mmD Polypropylene	1000
PT0059	Tube Centrifuge, Conical Bottom, Tubes and Caps Separate, 50mL115mmHx28D	500
PT1170	Tube Centrifuge 50mL Sterile Conical Bottom 115mmHX28mmD Polypropylene	500
PT1140	Tube Centrifuge 50mL Sterile Conical Bottom 115mmHX30mmD Polypropylene (Greiner)	500

RACKS - TEST TUBE

ROWE CODE	DESCRIPTION	PACK SIZE
PR0002	Rack Test Tube 16mm 5x12 Array (white) Polypropylene	ea
PR0003	Rack Test Tube 16mm 5x12 Array (blue) Polypropylene	ea
PR0004	Rack Test Tube 16mm 5x12 Array (red) Polypropylene	ea
PR0005	Rack Test Tube 16mm 5x12 Array (yellow) Polypropylene	ea
PR0014	Rack Test Tube 30mm 3x8 Array (blue) Nylon	ea
PR0013	Rack Test Tube 30mm 3x8 Array (white) Nylon	ea
PR0015	Rack Test Tube 30mm 3x8 Array (red) Nylon	ea
PR0016	Rack Test Tube 30mm 3x8 Array (yellow) Nylon	ea
PT2056	Rack Test Tube 24 Place 30mm Blue Polypropylene	ea
PT2057	Rack Test Tube 24 Place 30mm Red Polypropylene	ea
PT2055	Rack Test Tube 24 Place 30mm White Polypropylene	ea
PT2058	Rack Test Tube 24 Place 30mm Yellow Polypropylene	ea
PT1960	Rack Test Tube 60 Place 16mm Blue Polypropylene	ea
PT1950	Rack Test Tube 60 Place 16mm Red Polypropylene	ea
PT1955	Rack Test Tube 60 Place 16mm White Polypropylene	ea
PT1952	Rack Test Tube 60 Place 16mm Yellow Polypropylene	ea



Bel-Art

cowie

Kartell

TARSONS

Techno Plas
Excellence in Plastic Consumables & Custom Moulding

STIRRING BARS

ROWE CODE	DESCRIPTION	PACK SIZE
PM2265	Stirring Bar 15 x 6mm Cylindrical	ea
PM2400	Stirring Bar 20 x 6mm with Pivot Ring	ea
PM2270	Stirring Bar 20 x 6mm Cylindrical	ea
PM2500	Stirring Bar 25 x 6mm with Pivot Ring	ea
PM2630	Stirring Bar 30 x 6mm with Pivot Ring	ea
PM2275	Stirring Bar 30 x 6mm Cylindrical	ea
PM3070	Stirring Bar Restrainer	ea



ROTARY EVAPORATOR



IE1102

Stuart Diagonal Condenser Rotary Evaporator.

PTFE/glass liquid pathway for chemical inertness, sparkless induction motor, long life graphite impregnated PTFE vacuum seal, efficient flask and vapour tube ejection system.

Rotary evaporators are distillation units that incorporate an efficient condenser with a rotary flask system. As the flask containing the solvent is rotated it continually transfers a thin layer of liquid over the entire inner surface. This gives a very large surface area for evaporation that is effected by heating from the accessory waterbath. The rotating system is fitted with a special seal that allows the apparatus to be placed under vacuum. This reduces the boiling point of the solvents and removes the vapour phase making the process much more efficient.



Each unit is also provided with an easy to use vacuum release and a continuous feed system, which allows more solvent to be drawn into the rotating Florentine flask without the need to stop the operation. Rotary evaporator with diagonal glass condenser is used for standard distillations.

Glass set RE300 consists of:

Diagonal coil condenser, vapour tube for diagonal condenser, receiving flask 1000ml, Florentine flask 1000ml, feed tube with stopcock, vacuum seal, conical joint clip, spherical joint clip. Pictured bath is available separately.

Rowe Code: IE1102

IB1105

Stuart Digital Bath for use with the RE30X Rotary Evaporators

Digital temperature display, Corrosion resistant stainless steel bowl, Easy to clean clear interior bowl, Cool touch outer case

This attractive water bath has been specifically designed to be used with the Stuart rotary evaporators to give maximum efficiency for the smallest footprint. The clear LED digital shows the actual bath temperature or the set temperature. The RE300DB is suitable for lower temperature applications, the outer case is made from chemically resistant polypropylene.



Rowe Code: IB1105



SAFETY

CABINETS

ROWE CODE	DESCRIPTION	UNIT
HC3085	Cabinet Corrosive Storage 30L 552H x 418W x 370mmD ID Storemasta®	ea
HC3082	Cabinet Flammable Storage 30L 552H x 418W x 370mmD ID Storemasta®	ea



STOREMASTA®

**Is what you're after not shown?
Call us.
We either have it or will find it
for you.**

EYE PROTECTION

ROWE CODE	DESCRIPTION	UNIT
PG1005	Glasses Safety 555-Econospec Anti Scratch	ea
PS1144	Glasses Safety Clear Plastic Polycarb Fog/Scratch Resistant Coating	ea
PE1000	Eye Wash Station Green Polystyrene with 500mL Eye Wash Bottle Polyethylene	ea



GLOVES

ROWE CODE	DESCRIPTION	UNIT
HG1917	Glove Examination Powder Free Small Latex	100
HG1912	Glove Examination Powder Free Small Nitrile	100
HG1916	Glove Examination Powder Free Medium Latex	100
HG1911	Glove Examination Powder Free Medium Nitrile	100
HG1915	Glove Examination Powder Free Large Latex	100
HG1908	Glove Examination Powder Free Large Nitrile	100
HG1914	Glove Examination Powder Free X-Large Latex	100
HG1907	Glove Examination Powder Free X-Large Nitrile	100



Call us today for a free sample.

SCOOPS & SPOONS



SCOOPS - LABOPLAST®

ROWE CODE	DESCRIPTION	PACK SIZE
PS0063	Scoop single use without lid 141mm 25mL plastic	10
PS0065	Scoop single use with lid 142mm 25mL plastic	10
PS0066	Scoop single use without lid 160mm 50mL plastic	10
PS0067	Scoop single use with lid 161mm 50mL plastic	10
PS0068	Scoop single use without lid 205mm 100mL plastic	10
PS0069	Scoop single use with lid 206mm 100mL plastic	10
PS0070	Scoop single use without lid 216mm 150mL plastic	10
PS0071	Scoop single use without lid 216mm 150mL plastic	10



SCOOPS - STERIPLAST® (GAMMA STERILE)

ROWE CODE	DESCRIPTION	PACK SIZE
PS0048	Scoop single use without lid 141mm 25mL plastic	10
PS0049	Scoop single use with lid 142mm 25mL plastic	10
PS0051	Scoop single use without lid 160mm 50mL plastic	10
PS0052	Scoop single use with lid 161mm 50mL plastic	10
PS0053	Scoop single use without lid 205mm 100mL plastic	10
PS0054	Scoop single use with lid 206mm 100mL plastic	10
PS0055	Scoop single use without lid 216mm 150mL plastic	10
PS0056	Scoop single use without lid 216mm 150mL plastic	10



SPOONS - LABOPLAST®

ROWE CODE	DESCRIPTION	PACK SIZE
PS0072	Spoon single use packed 127mm 2.5mL plastic	100
PS0073	Spoon single use packed 170mm 10mL plastic	100



SPOONS - STERIPLAST® (GAMMA STERILE)

ROWE CODE	DESCRIPTION	PACK SIZE
PS0057	Spoon single use packed 127mm 2.5mL plastic	100
PS0058	Spoon single use packed 170mm 10mL plastic	100



Pharma/Food scoops Ref:53240010

Like all samplers for the pharmaceutical industry, they are made of Stainless steel V4A without edges, crevices or undercuts in which sample residues could collect and contaminate subsequent samples. The highly polished inner and outer surfaces of the scoop meet all the requirements for GMP compliance in production and sampling.



SPATULAS

SPATULAS- LABOPLAST®

ROWE CODE	DESCRIPTION	PACK SIZE
PS0074	Spatula single use w/o cover 263mm insert to 150mm plastic	10
PS0075	Spatula single use with cover 263mm insert to 150mm plastic	10

SPATULAS- STERIPLAST® (GAMMA STERILE)

ROWE CODE	DESCRIPTION	PACK SIZE
PS0059	Spatula single use w/o cover 263mm insert to 150mm plastic	10
PS0061	Spatula single use with cover 263mm insert to 150mm plastic	10

Also available from the



sampling range



Measuring scoops Ref:96140002

Universal graduated scoops ideal for measuring powders and granules. For exact metering, overfill then wipe the excess at the upper edge.

- Available from 2mL to 1000mL capacity
- Polypropylene, white
- High chemical-resistance
- Calibrated volume when full to the brim

Zone samplers Ref:53172055

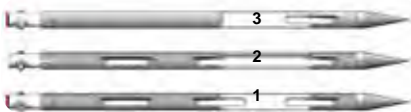
The big advantage of zone samplers is that all-layer samples can be collected from all layers of the container. Suitable for various bulk goods from the finest powder to large grains such as corn or nuts.

Samplers are available in different lengths.

55 cm suitable for sacks & bulk bags. 85 cm (for barrels, tubs, mixed containers)

150 cm and 250 cm (Jumbo sampler) for big bags, silos, and tanks.

Chamber combinations illustration above: **1.** Multi (closed chambers), **2.** Uno (one closed chamber) and **3.** All-layer sampler (open inner tube)



Pharma/Food CLOSE-IT™ labels Ref:53033017

Burkle have developed close-it food, a control seal with an adhesive which complies with the European guidelines for foodstuffs. *Close-it food reliably prevents products from leaking out after sampling.

It has a barrier layer of aluminium foil which makes it suitable for closure after sampling of foodstuffs, pharmaceuticals, cosmetics, food additives, even frozen goods. In short, for all applications in which cleanliness is particularly important.

Available 95mm square or 150mm square in red, yellow, blue, green black and white. Particularly suited for the food and pharma industry.

**FDA approval certificate available for all products*



STIRRING



HOMOGENISER

ROWE CODE	DESCRIPTION	UNIT
IH2660	Homogeniser Velp OV5	ea



MAGNETIC STIRRERS & FLOCCULATORS

ROWE CODE	DESCRIPTION	UNIT
IF2237	Magnetic Stirrer Hotplate AREC 15L capacity up to 540°C 0-1500rpm ceramic top plate 180x180mm	ea
IM2016	Magnetic Stirrer MST for operation on 100-240V 50-60Hz with universal power supply	ea
IS2318	Magnetic Multistirrer 6-place 230V 50Hz with universal power supply	ea
IM0079	Magnetic Stirrer Hotplate AREC up to 1500rpm & 370°C. 15L capacity load sensitive speed control	ea
IM2241	Magnetic Stirrer Hotplate AREC X 15L capacity, up to 450°C, 0-1300rpm, ceramic plate 180x180mm with connection for contact thermometer	ea
IM2224	Magnetic Stirrer Hotplate 4 place AM4 230V 50Hz	ea
IM2005	Magnetic Stirrer AGE 230V 50Hz	ea
IV1085	Vortex Mixer ZX3 100-240V 50-60Hz	ea
IM1063	Mixer Vortex Wizard with universal power supply	ea
IF1160	Flocculator Jar Test FP4 4-place portable 230V AC/12V DC	ea
IF1170	Flocculator JLT6 leaching/jar test 6 position back-lit on/off program speed 10 to 300rpm timer 0-999 mins or 99hrs or continuous 240V/50Hz 11W	ea
NV4100	Velp BOD Sensor System 10 includes 10 sensor caps, stirrer and bottles	ea
ID8025	Distillation Unit Semi-Automatic 3.5 colour touch screen 230V 50-60Hz UDK139	ea



IM0079



IM1063



IM2016



IS2318



IF2237



IM2005



IV1085



IM2224



NV4100



IF1170



ID8025

VELP
SCIENTIFICA

= EUROPEAN
QUALITY



STIRRING

STIRRING MOTORS

ROWE CODE	DESCRIPTION	UNIT
IS2220	Stirring Motor ES 35 watt without stirring paddle	ea
IS2221	Stirring Motor DLH 190 watt without stirring paddle	ea
IS2300	Stirrer support Rod (2 piece) & base	ea
IS2305	Stirrer double clamp for rod up to 19mm one side & to 34mm on other side	ea
IS2231	Stirring Motor LS 120 watt 50-2000rpm without stirring paddle	ea
IS2241	Stirring Motor PW 190 watt 20-1200rpm without stirring paddle	ea
IS2247	Stirring Motor Package includes DLS stirrer support rod and base double clamp and propeller stirring shaft. LCD display shows speed time and torque	kit
IO0052	Overhead Stirrer Kit LS. Also includes support rod and base double clamp stirring shaft with fixed blade. 25L stirring volume. 120 Watt 50-2000rpm	kit

STIRRING PADDLES

ROWE CODE	DESCRIPTION	UNIT
IS16594	Stirrer Paddle 3 blade for Velp overhead stirrer 40cm long 8mm diameter shaft 25mm long blade.	ea
IS16596	Stirrer Paddle 10 blade for overall length 40cm Velp overhead stirrer.	ea
IS16597	Stirring paddle with turbo propellor.	ea



Bundle your equipment and save!



Magnetic Stirrer Hotplate Velp AREC X
15L capacity, up to 450°C, 0-1300rpm, ceramic plate 180x180mm with connection for contact thermometer.
Rowe Code: IM2241



Stirring Motor Package Velp
Includes DLS stirrer support rod and base double clamp and propeller stirring shaft. LCD Display shows speed time and torque.
Rowe Code: IS2247



Overhead Stirrer Kit Velp LS
Includes Support Rod and base double clamp stirring shaft with fixed blade. 25L stirring volume. 120 Watt 50-2000rpm.
Rowe Code: IO0052



STOMACHER BAGS



GRADE

Why Use GRADE Laboratory Stomacher Bags?

- Grade Products are the world's quality brand of laboratory stomacher bags.
- Low (negligible) failure rate.
- The bags are easy to open and use.
- The bags are consistently reliable, robust and have a significantly lower failure rate.
- Grade is the longest standing manufacturer.
- Over 40 years of manufacturing knowhow makes the GRADE range successful.

The Standard 3500 is designed to be used with any 3500 ml laboratory blenders. The Standard 3500 bags are easy to use without the risk of cross contamination. The bags are capable of being used to process fruit, meat, sea food, pastry and biscuits.

Contact Rowe Scientific to discuss your volume needs and how we can keep you supplied.



The Standard 400 Stomacher Bag is a premium quality bag designed to fit any 400 ml paddle blender machines.



The Separator 400 bag has been designed to fit any 400 ml paddle blender machine. These polyethylene bags are treated using gamma irradiation, and has an inbuilt Separator bag made from plastic mesh suspended inside.



The Curved 400 Stomacher Bag has a curved lower seal and is designed to fit 400 ml Circulator® machines. It is manufactured from extruded polymer tube using high-grade, food quality polythene.



Call us - samples available.

SWABS



ROWE CODE	DESCRIPTION	PACK SIZE
PS3501	Swab surface ATP 3M clean trace	100
PS3508	Swab clean-trace surface protein allergen	60
PS3518	Swab polyester apha with long handle 100/pk x 10 (Texwipes TX761)	case
PS3519	Swab polyester large alpha sampling swab (Texwipes TX715)	100
PS3522	Swab pre-moistened TECRA Enviroswab™	25
PS3530	Swab Amies clear 175mm plastic cotton tip gamma sterile peel pack	100
PS3760	Swab 3M Quickswab™	250
PS3761	Swab 3M Quickswab™	50
PS0003	Swab pre-moistened TECRA Enviroswab™	500
PS0024	Swab surface protein plus 3M clean trace no instrument required (100 pack)	100



If you don't find what you need in the sample list above, please call your local Rowe Scientific consultant.

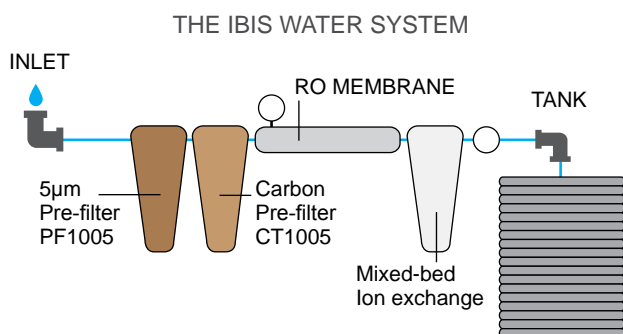




WATER PURIFICATION

IBIS WATER SYSTEMS

ROWE CODE	DESCRIPTION	PACK SIZE
IL0101	Labwater System Ibis Plus 6L P/H Manual	ea
IL0105	Labwater System 6L/Hr Ro/Di with Quality Monitor and Low Voltage Shut Off	ea
IL1155	Ibis Part - Water System, Tank 30L (Float Switch and Shut Off Included)	ea
II1160	Ibis Part - Water System, Tank 60L (Float Switch and Shut Off Included)	ea
IR1910	Reverse Osmosis Replacement Prefilter 5 Micron	ea
IR1949	Reverse Osmosis Ibis Carbon Prefilter	ea
ID1491	Deioniser Cartridge Ion-Exchange 10"	ea



MERCK® WATER SYSTEMS

ROWE CODE	DESCRIPTION	PACK SIZE
IW4020	Water System RIOS-DI Type II Water from Tap with 6L Built in Reservoir	ea
IC4504	Cartridge Smartpack RO-DI Purification Pack for RIOS	ea
FF7912	Filter for Vent on Internal Reservoir for Water Systems	2
HP1989	Pressure Regulator 0-58PSI (0-4 Bar) Gauge 8mm Tubing Connector	ea

Type I, II or III water quality available - we have a solution for you.



MERCK

WHIRL-PAK®



ROWE CODE	DESCRIPTION	PACK SIZE
RB0017	Sample bag Whirl-Pak® 13oz/384mL capacity 13x19cm 0.076mm thick sterile polyethylene	500
PB0070	Sample bag Whirl-Pak® 69oz/2041mL capacity 19x38cm 0.076mm thick sterile polyethylene	500
RB1602	Sample bag Whirl-Pak® 7oz/207mL capacity 9.5x18cm 0.076mm thick sterile polyethylene	500
RB1603	Sample bag Whirl-Pak® speci-sponge 18oz/532mL capacity 11.5x23cm 0.064mm thick with sponge for environmental surface sampling sterile polyethylene write-on strip	100
RB1604	Sample bag Whirl-Pak® 4oz/118mL capacity 7.5x18.5Cm 0.057mm thick sterile polyethylene write-on strip	500
RB1605	Sample bag Whirl-Pak® 2oz/58mL capacity 7.5x12.5cm 0.057mm thick sterile polyethylene write-on strip	500
RB1606	Sample bag Whirl-Pak® 24oz/710mL capacity 15x23cm 0.076mm thick sterile polyethylene write-on strip	500
RB1607	Sample bag Whirl-Pak® thio-bags 100mL capacity 7.5x18.5Cm 0.057mm thick with sodium thiosulfate sterile polyethylene write-on strip markings at 100ml and 300ml	100
RB1608	Sample bag Whirl-Pak® stand-up 24oz/710mL capacity 15x23cm 0.076Mm thick sterile polyethylene write-on strip	500
RB1611	Sample bag Whirl-Pak® 55oz/1627mL capacity 19x30cm 0.0102Mm thick sterile polyethylene write-on strip	500
RB1690	Sample bag Whirl-Pak® 18oz/532mL capacity 11.5x23cm 0.064Mm thick sterile polyethylene write-on strip	500
PS1022	Sampling pole for Whirl-Pak® bags extends from 6 -12ft (1.82-3.66m) swinging end comes with 3 retainer rings to hold bag fibreglass	ea

BETTER THAN BEAKERS - SAVE YOURSELF TIME, MONEY AND SPACE!



How to use **WHIRL-PAK®** bags



This catalogue is just a sample of some of the range we can help you with. If you can't find what you're looking for in this catalogue, try our online web store search function at

www.rowe.com.au

or give your local Rowe Scientific consultant a call.



New South Wales & ACT

Unit 1, 12 Essex Street
Minto NSW 2566
Ph: (02) 9603 1205
Fx: (02) 9603 1084

Queensland

Unit 1, 30 Argon Street
Summer Park QLD 4074
Ph: (07) 3376 9411
Fx: (07) 3376 9455

South Australia & Northern Territory

Lot 7, 41-47 O'Sullivan Beach Road
Lonsdale SA 5160
Ph: (08) 8186 0523
Fx: (08) 8186 0524

Victoria & Tasmania

Unit 2, 42 Green Street
Doveton VIC 3177
Ph: (03) 9701 7077
Fx: (03) 9769 2560

Western Australia

11 Challenge Boulevard
Wangara WA 6065
Ph: (08) 9302 1911
Fx: (08) 9302 1905



100% Australian owned company supplying your scientific needs throughout Australia and abroad since 1987

For accuracy and professionalism



ENVIRONMENTAL
SCIENCES



FOOD & FEED
SCIENCES



HEALTH & PATHOLOGY
SCIENCES



MINING, INDUSTRIAL,
OIL & GAS



UNIVERSITY & SCIENCE
EDUCATION



WINERY & BEVERAGE
SCIENCES



**South Australia &
Northern Territory**
Ph: (08) 8186 0523
rowesa@rowe.com.au

Queensland
Ph: (07) 3376 9411
roweqld@rowe.com.au

Victoria & Tasmania
Ph: (03) 9701 7077
rowevic@rowe.com.au

Western Australia
Ph: (08) 9302 1911
rowewa@rowe.com.au

New South Wales
Ph: (02) 9603 1205
rowensw@rowe.com.au

www.rowe.com.au



ROWE SCIENTIFIC
PTY LTD ABN 63 009 437 790

A proudly 100% Australian owned company
supplying laboratories since 1987.