



SCHOOLS CATALOGUE



2023

www.rowe.com.au

TABLE OF CONTENTS

CHEMICALS

A - B	1
C - E	1
F - G	1
H - I	1
L - M	2
P - S	2
T - Z	2

FILTRATION

FILTER PAPER	6
INDICATOR PAPER	7

GLASSWARE

BEAKERS	7
BOTTLES - LABORATORY	7
BOTTLES - ANCILLARIES	7
BURETTES	7
FLASKS	8
FUNNELS	8
JARS	8
MEASURING CYLINDERS	8
TEST/CULTURE TUBES	9
WATCH GLASSES	9

HARDWARE

BUNSEN BURNERS	9
BRUSHES	9
CLAMPS AND STANDS	9
CRUCIBLES, MORTARS AND PESTLES	10
CUVETTE	10
IMPLEMENTS	10
PARAFILM	10
PERIODIC TABLE PADS	10
TUBING	10
STOPPERS	11
SCAPELS	11
TEST TUBE RACKS	11
TRAY	11

INSTRUMENTS

PUMPS	12
STIRRING & HOTPLATES	12
SCIENCE KIT	12

LIQUID HANDLING

PIPETTORS	13
PIPETTES	13
PIPETTE - FILLER	13
PIPETTES - TIPS	13
SYRINGES	14

METERS

METERS - pH	14
TIMERS	14
THERMOMETER	14
WEIGHING	14

MICROSCOPY

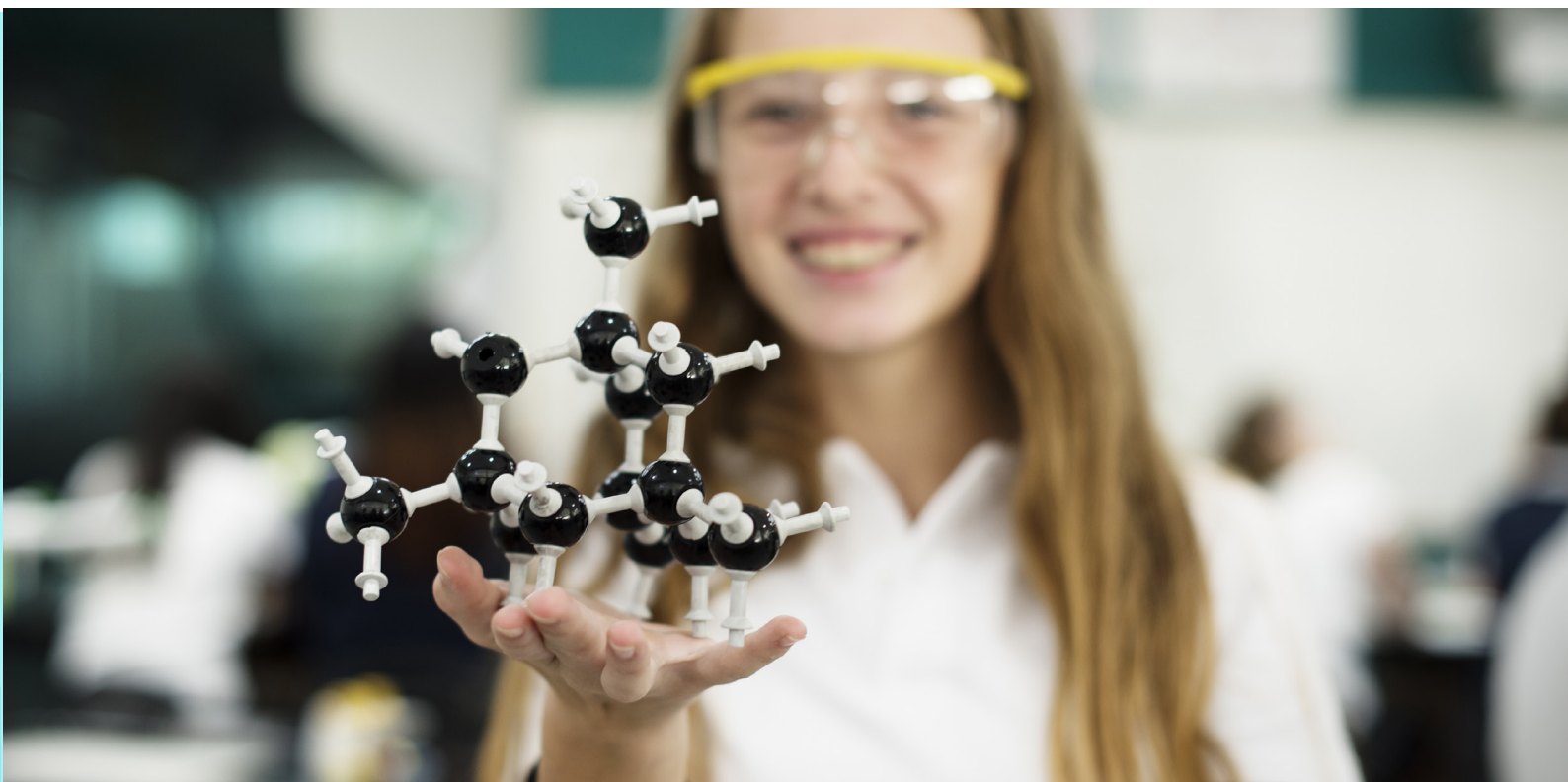
MICROSCOPES AND SLIDES	15
PREPARED SLIDES	15

PLASTICWARE

BEAKERS	16
BOTTLES - LABORATORY	16
BOTTLES - ANCILLARIES	16
BURETTE CLAMPS	16
FUNNELS	16
JARS / PCR TUBES	17
MEASURING CYLINDERS - TALL	17

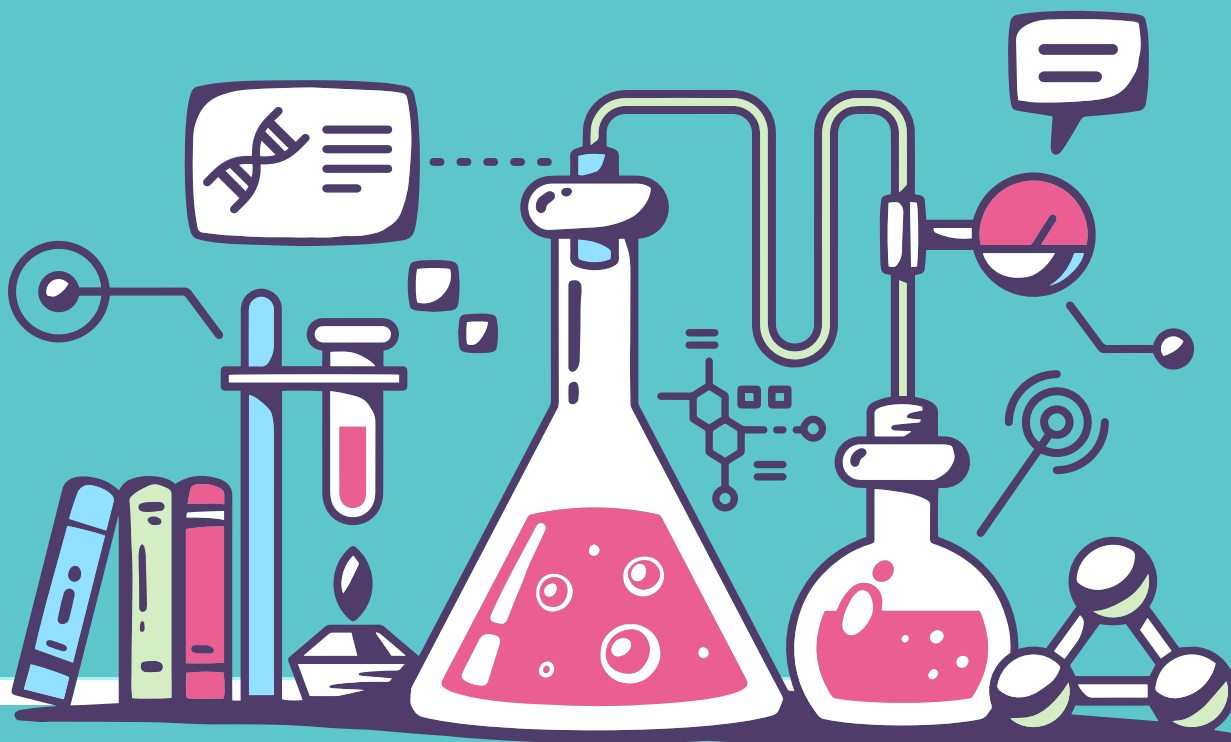
PERSONAL PROTECTION

GLOVES - MEDIFLEX - NITRILE / LATEX	17
SAFETY GLASSES	17
WIPES / MASKS	17



Providing laboratory supplies to the scientific community across Australia since 1987.

We are proudly a 100% Australian owned company.





CHEMICALS A-Z

DESCRIPTION	SIZE	UNIT	ROWE CODE
Acetic Acid Glacial AR	2.5L	EA	CA1215
Agar 1000 Gel (Agar Agar)	500g	EA	CA0056
Agar Nutrient	500g	EA	CA2265
Agar Poured Plate, Nutrient Agar	10PK	EA	CA2202
Aluminium Potassium Sulfate Dodecahydrate (GLR)	500g	EA	CA3524
Ammonium Chloride AR	500g	EA	CA1808
Anti-Bumping Granules (Fused Alumina) Small 1-3mm	250g	EA	CA1107
Barium Carbonate AR	500g	EA	CB1411
Boiling Chips Granules 1-2mm (Anti-Bumping Granules)	250g	EA	CB0918
Buffer pH 10.00 (Blue) Solution (Certificate Online)	1L	EA	CB3510
Buffer pH 10.00 (Blue) Solution NIST Traceable, In Contamination Proof Bottle (With Certificate Online)	500mL	EA	CB3515
Buffer pH 4.00 (Red) Solution (Certificate Online)	1L	EA	CB2665
Buffer pH 4.00 (Red) Solution NIST Traceable, In Contamination Proof Bottle	500mL	EA	CB2660
Buffer pH 7.00 (Green) Solution Certificate Online	1L	EA	CB3110
Buffer pH 7.00 (Green) Solution NIST Traceable, In Contamination Proof Bottle (With Certificate Online)	500mL	EA	CB3115
Calcium Dry Granules LR	100g	EA	CC2355
Calcium Carbonate AR	500g	EA	CC1612
Calcium Chloride Dihydrate AR	500g	EA	CC1808
Calcium Hydroxide - GLR	500g	EA	CC2510
Chromium Chips Thickness 2mm 99.5%	100g	EA	CC2693
Citric Acid Anhydrous Food Grade, Conforms To BP/FCC	500g	EA	CC0048
Citric Acid Anhydrous GLR	1kg	EA	CC3079
Copper (II) Chloride Dihydrate AR	500g	EA	CC2518
Copper (II) Nitrate LR Trihydrate	500g	EA	CC5357
Copper (II) Sulfate Pentahydrate (AR)	500g	EA	CC0082
Copper Carbonate LR	500g	EA	CC0724
D-Glucose Anhydrous AR	500g	EA	CG1556
Distilled (Demin) Water	20L	EA	CD2400
Distilled (Demin) Water	5L	EA	CD2405
Ethanol Absolute AR (Plastic Container) (Needs Licence)	2.5L	EA	CE1622
Ethanol Absolute Denatured (100IMS) Licence Not Required	2.5L	EA	CE1715
Glycerol GLR	2.5L	EA	CG1647
Grease High Vacuum LR Grade	50g	EA	CG0043
Hydrochloric Acid (0.100+/-0.001m)(AR)	125mL	EA	CH1130
Hydrochloric Acid (0.1000 +/- 0.0005)M AR Standard Solution	2.5L	EA	CH1115
Hydrochloric Acid 32% AR	2.5L	EA	CI1241
Hydrochloric Acid 32% Technical	2.5L	EA	CH1100
Hydrochloric Acid Solution 2M	1L	EA	CH0352
Hydrogen Peroxide 3% w/v	2.5L	EA	CH2874
Hydrogen Peroxide 30% AR w/v (100 Volume)	500mL	EA	CH1197
Immersion Oil	100mL	EA	CI0237
Iron (II) Sulfate Heptahydrate AR	500g	EA	CF2724



CC3079



CB2660



CB3115



CB3515



FF1300



DESCRIPTION	SIZE	UNIT	ROWE CODE
Iron Filings Fine Technical	500g	EA	CI1241
Iron Filings/Powder GLR	500g	EA	CI1250
Lead Nitrate LR	500g	EA	CL2030
Lithium Chloride Anhydrous LR	500g	EA	CL1750
Magnesium Ribbon	25g	EA	CM2955
Manganese Dioxide GLR	500g	EA	CM3600
Methyl Orange Indicator	25g	EA	CM4246
Methylene Blue (CI52015)	25g	EA	CM4580
Methyl Red Indicator, Free Acid AR	10g	EA	CN1062
Phenolphthalein Solution 1% Indicator In Propan-2-ol	100mL	EA	CP5253
Potassium Chloride AR	500g	EA	CP2600
Potassium Hydroxide Pellets AR	500g	EA	CP3950
Potassium Iodide AR (EUD Required)	500g	EA	CP4052
Potassium Metal AR In Liquid Paraffin	100g	EA	CP6374
Propan-2-OL (Isopropanol) GLR	2.5L	EA	CP6371
Quantumclean Laboratory Detergent	1L	EA	CQ1000
Quantumclean Laboratory Detergent	5L	EA	CQ1050
Silica Gel Self Indicating 2-5mm Orange	500g	EA	CS7482
Silver Nitrate AR Less Than 2.5ppm Au	25g	EA	CS8255
Silver Nitrate AR Less Than 2.5ppm Au	100g	EA	CS8250
Sodium Bicarbonate GLR	500g	EA	CS9400
Sodium Carbonate Anhydrous AR	500g	EA	CS10038
Sodium Chloride AR	500g	EA	CS10307
Sodium Hydrogen Carbonate AR	500g	EA	CS6825
Sodium Hydrogen Carbonate GR For Analysis ACS, Reag. Ph Eur, AR	500g	EA	CS9526
Sodium Hydroxide (0.1000 +/- 0.0005)M AR Standard Solution	2.5L	EA	CS11390
Sodium Hydroxide (1.00 +/- 0.005)M AR Standard Solution	1L	EA	CS12045
Sodium Hydroxide Micropearls GLR	500g	EA	CS11350
Sodium Hydroxide Pellets AR (Less Than 10ppm SiO2)	500g	EA	CS12005
Sodium Hypochlorite GLR 12.5%	5L	EA	CS12345
Sodium Iodide AR	100g	EA	CS1233
Sodium Metal Lumps Under Parafin LR	100g	EA	CS12455
Sodium Sulfate Anhydrous (Powder) AR	500g	EA	CS0087
Sodium Tetraborate Decahydrate AR	500g	EA	CS1130
Sodium Thiosulfate Pentahydrate AR	500g	EA	CS14251
Starch Solution 1% m/v	1L	EA	CS1489
Strontium Chloride Univar	500g	EA	CS14401
Sucrose AR	500g	EA	CS1747
Sulfur Roll	1kg	EA	CS1598
Sulfuric Acid 98% AR	500mL	EA	CS15048
Sulfuric Acid 98% GR For Analysis AR (Glass)	2.5L	EA	CS1483
Toluene For Analysis Emsure ACS ISO REAG. PH EUR	2.5L	EA	CT2295
Zinc Granules LR	500g	EA	CZ1008

FILTER PAPER

DESCRIPTION	UOM	CODE
Paper Filter 7.0cm Similar to Gr1 (MN615)	100	FF1100
Paper Filter 9.0cm Similar to Gr1 (MN615)	100	FF1150
Paper Filter 11.0cm Similar to Gr1 (MN615)	100	FF1200
Paper Filter 11.0cm Whatman® 5	100	FF2127
Paper Filter 11.0cm Similar to Gr5 (MN619)	100	FF2389
Paper Filter 12.5cm Similar to Gr1 (MN615)	100	FF1300
Paper Filter 15.0cm Similar to Gr1 (MN615)	100	FF1450
Paper Filter 15.0cm Whatman® 5	100	FF2300
Paper Filter 15.0cm Similar to Gr5 (MN619DE)	100	FF2401
Paper Filter Folded MN614 1/4 15.0cm	100	FF1066



FF2300 - Paper Filter 15.0cm Whatman® 5



FF1300 - Paper Filter 12.5cm Similar to Gr1 (MN615)

INDICATOR PAPER

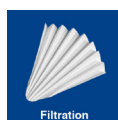
DESCRIPTION	UOM	CODE
Indicator Paper, Litmus, Blue	100	FI1400
Indicator Paper, Litmus, Red	100	FF1450
Indicator Strips pH 0-14 In Snap Cap Tube	100	FI1101
Indicator Strips pH 2-9	100	FI1200
CHROMATOGRAPHY PAPER 2.0CM X 100M WHATMAN 1CHR	100m	FF4005



FF1400 - Indicator Paper, Litmus, Blue

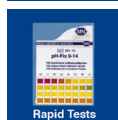


German made filter papers manufactured by Macherey-Nagel.



FILTRATION

Filter papers, extraction thimbles, membranes, syringe filters, 96-well filter plates Porafil®, CHROMAFIL.



RAPID TESTS

Test papers, test strips, pH-Fix, QUANTOFIX®, Medi-Test, URYXXON®.



WATER ANALYSIS

Colourmetric and titrimetric test kits, photometric water analysis microbiological tests, VISOCOLOR®, NANOCOLOR®, Biofix®.



BEAKERS

DESCRIPTION	SIZE	UNIT	ROWE CODE
Borosilicate Glass Low Form Graduated	50mL	EA	GB1660
	100mL	EA	GB1810
	150mL	EA	GB1870
	250mL	EA	GB2060
	400mL	EA	GB2210
	600mL	EA	GB2310
	800mL	EA	GB2510
	1000mL	EA	GB2610



GB2610

BOTTLES - LABORATORY

DESCRIPTION	SIZE	UNIT	ROWE CODE
BOD	300mL	EA	GB4246
Borosilicate Glass With GL45 Blue Screw Cap	50mL	EA	GB7855
	250mL	EA	GB7955
	500mL	EA	GB8005
	1000mL	EA	GB8055
	2000mL	EA	GB8105
Round Amber Soda Glass With Ear Shaped Handle, Mass 1030g, Height 310mm, Diameter 137mm, Screw Diameter 37mm Includes Black Tamper Evident Screw Cap With PTFE Wad Installed	2500mL	EA	DL6251



GB7955

GB8055

BOTTLES - ANCILLARIES

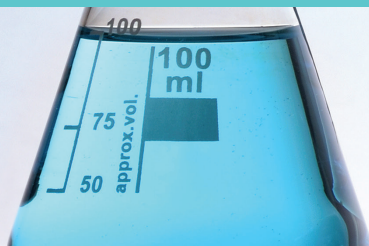
DESCRIPTION	SIZE	UNIT	ROWE CODE
Eye Dropper & Teat For 50mL Bottle, Black		EA	GE0008
Bottle Dropping Round 50mL Amber Glass With Glass Dropper, 80mm With Red Teat	50mL	EA	GB4450
Teats, For Pasteur Pipettes Red Rubber		EA	HT1510

BURETTE

DESCRIPTION	UOM	UNIT	ROWE CODE
Burette Schellbach Blue Graduations With PTFE Stopcock Class 'AS' 25mL x 0.05mL Borosilicate Glass	25mL	EA	GB9001
Burette Schellbach Blue Graduations With PTFE Stopcock Class 'AS' 50mL x 0.10mL Borosilicate Glass	50mL	EA	GB9003

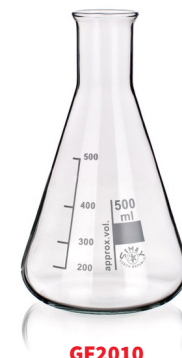


GE0008



FLASKS

DESCRIPTION	SIZE	UNIT	ROWE CODE
Volumetric 'A' Class Blue Graduations With Plastic Stopper Neck 12/21 Borosilicate Glass	50mL	EA	GF9004
	100mL	EA	GF9006
	100mL	2	CB1776
Volumetric 'A' Class Blue Graduations With Plastic Stopper Neck 14/23 Borosilicate Glass	250mL	EA	GF9007
Volumetric 'A' Class Blue Graduations With Plastic Stopper Neck 19/26 Borosilicate Glass	500mL	EA	GF9008
Volumetric 'A' Class Blue Graduations With Plastic Stopper Neck 24/29 Borosilicate Glass	1000mL	EA	GF9009
Volumetric 'A' Class Blue Graduations With Plastic Stopper Neck 12/21 Borosilicate Glass	50mL	EA	GF9004
	100mL	EA	GF9006
	100mL	2	CB1776
Volumetric 'A' Class Blue Graduations With Plastic Stopper Neck 14/23 Borosilicate Glass	250mL	EA	GF9007
Volumetric 'A' Class Blue Graduations With Plastic Stopper Neck 19/26 Borosilicate Glass	500mL	EA	GF9008
Volumetric 'A' Class Blue Graduations With Plastic Stopper Neck 24/29 Borosilicate Glass	1000mL	EA	GF9009
Erlenmeyer - Narrow Neck Rimmed Borosilicate Glass	50mL	EA	GF1710
	100mL	EA	GF0227
	250mL	EA	GF1855
	500mL	EA	GF2010
Filter Flask 250mL Borosilicate Neck ID Approx 34mm With 10mm Side Arm Vacuum	1000mL	EA	GF2160
	250mL	EA	GF3162



GF2010



FUNNELS

DESCRIPTION	SIZE	UNIT	ROWE CODE
Analytical 65mm Diameter Polypropylene	65mm	EA	PF1605
	75mm	EA	PF1675
Buchner Porcelain 70mm D Filter Paper (237/3)	70mm	EA	WF1060
Long Stem 65mm Diameter Polypropylene	65mm	EA	PF1379
Powder 80mm Diameter Polypropylene	80mm	EA	PF1955
Short Stem Soda Glass	60mm	EA	GF5592
	100mm	EA	GF5710
150mm Dia. Approx 60 Degree Sides Short Stem (150mm Long, 17mm Diam), Borosilicate Glass	150mm	EA	GF5756



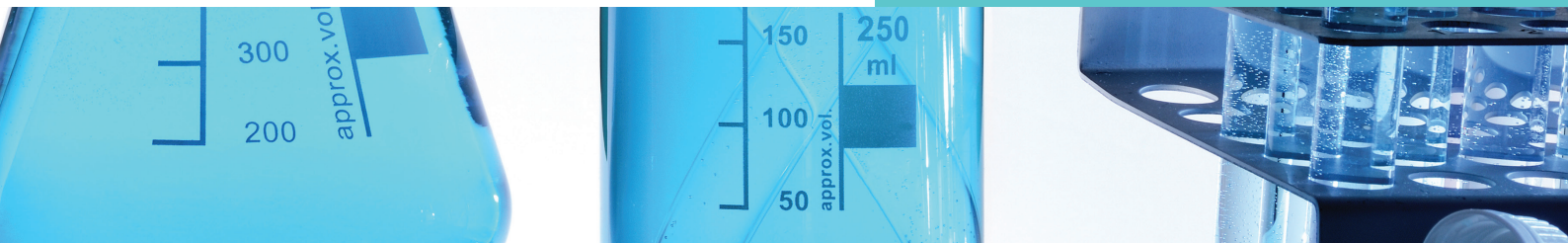
JARS

DESCRIPTION	UOM	UNIT	ROWE CODE
Jar 250mL With White Lid & Wax Insert, Clear Glass	EA	EA	GJ1425



MEASURING CYLINDERS

DESCRIPTION	SIZE	UNIT	ROWE CODE
Tall Form Spouted 10mL Glass With Blue Polypropylene Base & Collar	10mL	EA	GC9002
Tall Form Spouted 50mL Glass With Red Polypropylene Base & Collar	50mL	EA	GC9004



MEASURING CYLINDERS

DESCRIPTION	SIZE	UNIT	ROWE CODE
Tall Form Spouted 100mL Glass With Orange Polypropylene Base & Collar	100mL	EA	GC9005

TEST / CULTURE TUBES

DESCRIPTION	UNIT	ROWE CODE
Tube Culture, Disposable, 16x150mm, Borosilicate Glass	1000	GT2305
Tube Culture, Disposable, 18x150mm, Borosilicate Glass	600	GT2495
Tube Culture 16x150mm 20mL Polystyrene	600	PT2320
Tube Culture 12x75mm Disposable Borosilicate Glass	1000	GT2105



GC9005

WATCH GLASSES

DESCRIPTION	UNIT	ROWE CODE
Watch Glass With Fused Edge 80mm Soda Glass	EA	GW1601
Watch Glass, Soda, 60mm With Fire Polished Edge	EA	GW1553
Watch Glass With Fused Edge 80mm Soda Glass	EA	GW1601
Watch Glass 130mm Diameter, Soda Glass	EA	GW1800
Watch Glass With Fused Edge 150mm Soda Glass	EA	GW1602
Dish Evaporating 75mL With Spout, Glazed Porcelain, 32mmh x 82mmW	EA	WB1650

Hardware

H

BUNSEN BURNER

DESCRIPTION	UNIT	ROWE CODE
Burner Bunsen 11mm OD LPG 135mm High	EA	HB2850
Burner Bunsen 11mm O.D Natural Gas 135mm High	EA	HB2800
Mat Gauze 15x15cm	EA	HM1450
Mat Wire Gauze 150mm x 150mm Plain	EA	HM0164



BRUSHES

DESCRIPTION	UNIT	ROWE CODE
Brush test tube 15D x 80L x 300mm total fan end	EA	HB1850
Brush test tube 20D x 100L x 300mm total fan end	EA	HB1930
Brush test tube 13D x 65L x 300 total	EA	HB1790



HB1100

CLAMPS AND STANDS

DESCRIPTION	UNIT	ROWE CODE
Bosshead Hold 16mm Diameter	EA	HB1100
Bosshead Hold 16mm Diameter Economy	EA	HB1090
Retort Clamp 4-Prong 2-70mm	EA	HR1000
Retort Clamp 4-Prong With Corklined Jaws Aluminium Diecast	EA	HR1010
Retort Ring 60mm I.D 180mm Long Arm, Zinc Plated Steel	EA	HR1210
Retort Stand 20x14cm Side Support Base + 60cm Rod	EA	HR3300
Tripod Round 110mm O.D., 205mm High	EA	HT1771





CRUCIBLES, MORTARS & PESTLES

DESCRIPTION	SIZE	UNIT	ROWE CODE
Crucible, Low Form Glazed With Lid, 25mL Diam 51mm x 30mm H, Porcelain	25mL	EA	WC0009
Crucible, Low Form Glazed With Lid, 30mL, Diam 55mm x 34mm H, Porcelain	30mL	EA	WC0010
Triangle Pipe-Clay 50mm Side	50mm	EA	WT1050
Spotting Cavity Tile Porcelain 12-Place		EA	ES0008
Mortar And Pestle Porcelain 60mm Diam x 35mm 60mL	35mL	EA	WM0002
Mortar And Pestle Porcelain 100mm Diam x 50mm 100mL	100mL	EA	WM0004
Mortar And Pestle Porcelain 130mm Diam x 70mm 300mL	300mL	EA	WM0005

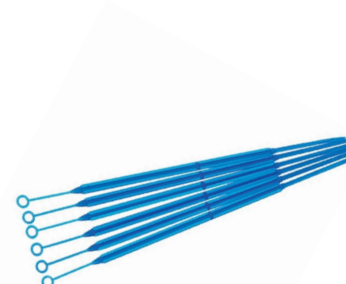


CUVETTE

DESCRIPTION	SIZE	UNIT	ROWE CODE
Cuvette Disposable 4.5mL 10mm Visible PS	4.5mL	100	PC3750

IMPLEMENTS

DESCRIPTION	UOM	UNIT	ROWE CODE
Forceps Specimen Stainless Steel Straight Blunt Serrated Tip 160mm		EA	HF5000
Inoculating Loop 10uL Blue Polypropylene Gamma Sterile		1000	PI1240
Slinky Spring - Long		EA	ES1900
Spatula Chattaway Micro 150x3mm		EA	HS3505
Spatula With Micro Spoon One End, Blade 40mmL x 5mmW, Overall Length 150mm		EA	HS0502
Tongs Crucible S/S 220mm		EA	HT1200
Tongs Crucible Stainless Steel 280mm		EA	HT1250
Tuning Forks Set Of 8		8	ET1200
Tweezers (Forceps) Microscopic, Strongly Curved With Guide Pin, 130mm		EA	HT2660



PP1200



HT1200

PARAFILM

DESCRIPTION	SIZE	UNIT	ROWE CODE
Parafilm 5cm Wide 75m Long	75m	75m	IM0250
Parafilm 10cm Wide 38m Long (PM996)	38m	38m	IM0124



PP1200

PERIODIC TABLE PADS

DESCRIPTION	SIZE	UNIT	ROWE CODE
Chart Periodic Table A4 Double Sided, Pad Of 25 Sheets	A4	EA	HC2011

TUBING

DESCRIPTION	UNIT	ROWE CODE
Tubing 6mm I.D. 9.0mm O.D. 1.5mm Wall, Clear Vinyl	EA	PT2800
Tubing Silicone Rubber For Bunsen Burners Reinforced Ends 90cm	EA	PT0086



PT2800



STOPPERS

DESCRIPTION	UNIT	ROWE CODE
Stopper Solid 11mm B 17mm T 19mm H Rubber	EA	HR1965
Stopper Solid 13mm B 16mm T 19mm H Rubber	EA	HR1550
Stopper Solid 14mm B 19m T 25mm H Rubber	EA	HR1700
Stopper Solid 16mm B 19mm T 19mm H Rubber	EA	HR1750
Stopper Solid 19mm B 22mm T 19mm H Rubber	EA	HR1950
Stopper Solid 21mm B 24mm T 22mm H Rubber	EA	HR2100
Stopper Solid 22mm B 25mm T 25mm H Rubber	EA	HR2250
Stopper Solid 25mm B 29mm T 25mm H Rubber	EA	HR2400
Stopper Solid 29mm B 32mm T 25mm H Rubber	EA	HR2550
Stopper Solid 32mm B 38mm T 32mm H Rubber	EA	HR2700
Gooch Rubber (Guko) Grey, 41mm Top 27.5mm Base, Size 4, Rubber	EA	HS2247



SCALPELS

DESCRIPTION	UNIT	ROWE CODE
Scalpel Blade No. 10A Carbon Steel For Use With Scalpel Handle No. 3, Individually Foil Packed	100	HS0255
Scalpel Blade No. 23 Carbon Steel For Use With Scalpel Handle No. 4, Individually Foil Packed	100	HS0272
Scalpel Blade No. 13 Carbon Steel For Use With Scalpel Handle No. 3, Individually Foil Packed, Sterile	100	HS0259
Scalpel Handle No. 23 Disposable With Plastic Handle, Sterile (Carbon Steel Blade) "Swann Morton"	10	HS1503
Scalpel Handle No. 3 Suits No. 10 To No. 15 Blades	EA	HS1450
Scalpel Handle No. 04 Stainless Steel Compatible With Blades From #18 To #36	10	HS0277
Scalpel Handle No. 4 Stainless Steel Compatible With Blades From #18 To #36	EA	HS1500



TEST TUBE RACKS

DESCRIPTION	UNIT	ROWE CODE
Test Tube Basket Autoclavable, 160mm X 160mm X 160mm, Polypropylene	EA	PT0600
Test Tube Holder 28mm, Wooden	EA	HT1600
Test Tube Rack 60 Place 16mm Red Polypropylene	EA	PT1950
Test Tube Rack White 25mm 3 x 8 Array Polypropylene	EA	PR0019
Test Tube Rack, 10 Place 16mm Diameter Tube Plastic	EA	PT1865
Draining/Drying Rack Free Standing 36 Position 360W x 500H x 300D mm White Plastic Coated	EA	HW14738



PT1950

TRAY

DESCRIPTION	UNIT	ROWE CODE
Tray 303 x 403 x 63mm 12 Compartments (90 x 90mm) PVC	EA	PT1580



PUMPS

DESCRIPTION	SIZE	UNIT	ROWE CODE
Hand Operated Vacuum Pump With Gauge To Fit 6mm Tubing	1000uL	500	PV1700



PV1700

STIRRING & HOTPLATES

DESCRIPTION	UNIT	ROWE CODE
Hotplate Simmerstat Control	EA	IH1725
Magnetic Stirrer Hotplate With Simmerstat Control	EA	IM2250
Magnetic Stirrer Velp MST. Up To 1100 RPM, Up To 5L	EA	IS0152
Magnetic Stirrer Hotplate, VELP ARE Up To 1500 RPM & 370 Degrees.	EA	IM0079
Stirring Bar 8 x 3mm Cylindrical	EA	PM2256
Stirring Bar 3mm x 8mm With Pivot Ring	EA	PM2255
Stirring Bar 12 x 4.5mm Cylindrical	EA	PM2258
Stirring Bar 15 x 4.5mm Plain	EA	PM2310
Stirring Bar 20 x 6mm Cylindrical	EA	PM2270
Stirring Bar 20 x 6mm With Pivot Ring	EA	PM2400
Stirring Bar 70 x 10mm	EA	PM2950
Stirring Bar 300mm Retriever, PVC Coated	EA	PM3050
Stirring Rod 20cm x 8mm Borosilicate Glass	EA	GS1200
Stirring Rod 8mm D x 300mm L Borosilicate Glass	EA	GS1250



PM2270



PM2270

SCIENCE KIT

DESCRIPTION	UNIT	ROWE CODE
Dissecting Kit 10 Pieces In Zip Up Pouch	EA	ED1420
Light Box & Optical Set, "Hodson" With Transformer 240/12v	EA	EL1002
Magnet, Bar Alnico 75mm x 12mm x 8mm With Keepers	2	EM0156
Magnet, Horseshoe, Alnico 75mm x 12mm x 5mm	EA	EM0157



EM0156



IS0152 - Magnetic Stirrer VELP MST. Up To 1100 rpm, Up To 5L



IM0079 - Magnetic Stirrer Hotplate, VELP ARE. Up To 1500 rpm & 370 Degrees. 15 L Capacity, Load Sensitive Speed Control.



ED1420 - Dissecting Kit 10 Pieces In Zip Up Pouch



EL1002 - Light Box & Optical Set, "Hodson" With Transformer 240/12v



PIPETTORS

DESCRIPTION	SIZE	UNIT	ROWE CODE
Dlab, 2-20uL Single-Channel, Adjustable Volume, Mechanical Autoclavable, Micropipette Plus	2-20uL	EA	DP0114
Dlab, 20-200uL Single-Channel, Adjustable Volume, Mechanical Autoclavable, Micropipette Plus	20-200uL	EA	DP0104
Dlab, 100-1000uL Single-Channel, Adjustable Volume, Mechanical Autoclavable, Micropipette Plus	100-1000uL	EA	DP0105
Pipettor, Transferpette "ALPHA" variable volume 2uL - 20uL, CE-IVD	2-20uL	EA	DP0527
Pipettor, Transferpette "ALPHA" variable volume 20uL - 200uL, CE-IVD	20-200uL	EA	DP0529
Pipettor, Transferpette "ALPHA" variable volume 100uL - 1000uL, CE-IVD	100-1000uL	EA	DP0530



DP0114 - DLAB, 20-200uL Single-Channel, Adjustable Volume, Mechanical Autoclavable, Micropipette Plus

PIPETTES

DESCRIPTION	SIZE	UNIT	ROWE CODE
Graduated 'AS' grade 1mL with 0.01mL graduations	1mL	EA	GP9001
Graduated 'AS' grade 10mL with 0.1mL graduations	10mL	EA	GP9005
Graduated 'AS' grade 25mL with 0.1mL graduations	25mL	EA	GP2052
Transfer (pasteur) graduated to 1mL in 0.25mL divisions, 5mL total capacity, 150mm long, bulk pack, LDPE	5mL	500	PP1914
Pipette pasteur 150mm long, soda-lime glass ISO7712, autoclavable	250	EA	GP1220
Pipette pasteur 230mm long, soda-lime glass ISO7712, autoclavable	250	EA	GP1221



GP9005

PIPETTE FILLER

DESCRIPTION	SIZE	UNIT	ROWE CODE
Pipette Filler 3 Valve Long For All Size Pipettes Red Rubber		EA	HP1455
Pipette Filler, Standard 3 Valve For Pipettes Up To 10mL Red Rubber, Brand		EA	HP0113



HP1455 - Pipette Filler 3 Valve Long For All Size Pipettes Red Rubber

PIPETTE TIPS

DESCRIPTION	PACK	SIZE	UNIT	ROWE CODE
Tip Pipette Filter 10uL Sterile Polypropylene (31.6mm Long)	RACK	10uL	960	DT0272
Tip Pipette Filter 10uL XL Sterile Polypropylene (44.5mm Long)	RACK	10uL	960	DT0273
Tip Pipette Filter 20uL Racked Sterile Polypropylene (50.5mm Long)	RACK	20uL	960	DT0274
Tip Pipette Filter 20uL Graduated Racked Sterile Polypropylene, Autoclavable	RACK	20uL	960	PT0218
Tip Pipette 200uL Sterile Racked Polypropylene (59mm Long) Yellow Case	RACK	200uL	960	DT0292
Tip Pipette Filter Racked Sterile Polypropylene (86.3mm Long)	RACK	1000uL	960	DT0277
Tip, Pipette Clear Graduated To Suit Eppendorf, Gilson, FinnpiPETTE, Boeco, Witeg	BULK	1000uL	500	DL3959
Tip Pipette 10uL Graduated, To Suit Eppendorf Gilson FinnpiPETTE Rainin Biohit (Boeco)	BULK	10uL	1000	PT0240
Tip Pipette 10uL XL/20uL, Extra Long, Graduated, To Suit Eppendorf, Gilson, Brand, FinnpiPETTE Pipettors	BULK	20uL	1000	DT0063
Tip Pipette 200uL Bevelled, Yellow, To Suit Eppendorf Gilson FinnpiPETTE Rainin Biohit (Boeco), Bulk Pack	BULK	200uL	1000	PT0242
Tip Pipette 200uL Graduated, To Suit Eppendorf Gilson FinnpiPETTE Rainin Biohit (Boeco), Bulk Pack	BULK	200uL	1000	PT0244
Tip, Pipette Clear Graduated To Suit Eppendorf	BULK	5mL	250	DL3974
Tip, Pipette Clear To Suit Rainin, Gilson 5mL (Extra Long, 150mm)	BULK	5mL	250	DT0005
Tip Pipette 10mL To Suit Boeco (Gp Series Only), Gilson, Eppendorf, Brand Clear Graduated, 165mm Long	BULK	10mL	100	DL3907





SYRINGES

DESCRIPTION	UNIT	ROWE CODE
Syringe 1mL Luer Slip Single Use, Sterile	100	PS1611
Syringe 5mL Disposable Luer Lock	100	PS1755
Syringe 10mL Plastic Luer Lock Disposable, Sterile (Individually Wrapped)	100	PS1840
Syringe 20mL Luer Slip Eccentric Tip Single Use	50	PS1951



PS1611

METERS - pH

DESCRIPTION	UNIT	ROWE CODE
pH Meter Hanna Checker Plus	EA	IM0250
pH Meter, Pen Type, Range 0.0-14.0 x 0.1, Auto-Calibration, Waterproof Housing	EA	IM0124
pH Pocket Tester 0-14 x 0.01 Digital (PHEP 5) With ATC	EA	IP1805
Meter pH mV Temperature Waterproof With pH And Temperature Sensor And 1m Cable Aqua-pH	EA	IP1198



IM0250

IM0124

TIMERS

DESCRIPTION	UNIT	ROWE CODE
Stopwatch 6 Digit, 1/100 Second Water Resistant Large Face	EA	HS0681
Timer Clock Countup/Countdown (Replaces IT1530)	EA	IT0240



IT0240

THERMOMETER

DESCRIPTION	SIZE	UNIT	ROWE CODE
Thermometer -10/110/1.0C Green Spirit 76mm Immersion 300mm Long	300mm	EA	GT4755
Thermometer -10/110/1.0C Red Spirit 76mm Immersion 305mm Long	305mm	EA	GT4750



GT4750

WEIGHING

DESCRIPTION	UNIT	ROWE CODE
Weighing Boat Anti-Static White Square Biologically Inert 41x41mm Polystyrene	EA	PB0306
Weighing Boat Anti-Static White Square Biologically Inert 89x89mm Polystyrene	EA	PB0307
Balance Ohaus 220g x 0.01g Navigator Nv222, Portable With External Calibration, AC Adapter Included, 4 x C Batteries (Not Included)	EA	IB0662
Balance Balance Portable 620g x 0.1g CR621 Ohaus	EA	IB0493



IB0493 - Balance Balance Portable 620g x 0.1g CR621 Ohaus



PB0306

PB0307



IP1805 - pH Pocket Tester 0-14 x 0.01 Digital (PHEP 5) With ATC



MICROSCOPES AND SLIDES

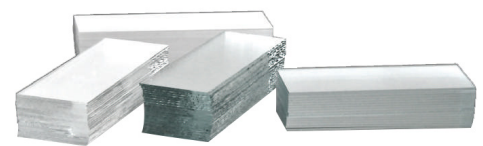
DESCRIPTION	UNIT	ROWE CODE
Microscope Biological Student M Series Monocular 4x/10x/40x Objective Metal Stage Tungsten Illumination	EA	EM0132
Microscope Slides, Plain, Standard Grade, Ground Edges, 90 Degree Corners, 75x25x1mm	50	EM0224
Microscope Cover Slips 22 x 22mm, No.1, Super White Glass, 200pcs/Hinged-Lid Box, In Aluminium Vacuum Pack With Desiccant	200	GM2305

PREPARED SLIDES

DESCRIPTION	SIZE	UNIT	ROWE CODE
Prepared Slide, Allium Root Tip		EA	EP0038
Prepared Slide, Animal Meiosis, Spermatogenesis In Grasshopper Testis		EA	EP0037
Prepared Slides, Mitosis Phases, Set Of 5		SET	EP0039
Microscope Slide Prepared Set-Bacteria (6 Slides)		SET	EM0150



EM0132 - Microscope Biological Student M Series Monocular 4x/10x/40x Objective Metal Stage Tungsten Illumination



EM0224 - Microscope Slides, Plain, Standard Grade, Ground Edges, 90 Degree Corners, 75x25x1mm



GM2305 - Microscope Cover Slips 22x22mm, No.1, Super White Glass, 200pcs/Hinged-Lid Box, In Aluminium Vacuum Pack With Desiccant



BEAKERS

DESCRIPTION	SIZE	UNIT	ROWE CODE
Polypropylene (Tarsons)	50mL	EA	PB3855
	100mL	EA	PB3955
	250mL	EA	PB4002
	500mL	EA	PB4102
	1000mL	EA	PB4202



PB3955

BOTTLES LABORATORY

DESCRIPTION	SIZE	UNIT	ROWE CODE
HDPE Narrow Neck 28mm With Cap - White Cap	250mL	EA	PB2300
	500mL	EA	PB2450
	1000mL	EA	PB2510
Polypropylene Wide Mouth Boston With Polypropylene Screw Cap	1000mL	EA	PB3390
Dropping Bottles HDPE With Insert And Screw Cap	46mL	EA	PD4130



PB3390

BOTTLES ANCILLARIES

DESCRIPTION	SIZE	UNIT	ROWE CODE
Deionized Water, Safety Labelled & Vented, Natural Cap, Integral Side Spout, LDPE	250mL	EA	PB0067
Distilled Water, Safety Labelled & Vented, Natural Cap, LDPE	500mL	EA	PW1406
Ethanol Safety Labelled & Vented, White Cap, LDPE	500mL	EA	PW1378
Integral Tube LDPE/PP Closure	500mL	EA	PW1302
Wide Neck LDPE/PP Closure (Natural Cap)	500mL	EA	PW2365



PW1406

BURETTE CLAMPS

DESCRIPTION	UOM	UNIT	ROWE CODE
BURETTE CLAMP DOUBLE PLASTIC		EA	PB1250
BURETTE CLAMP SINGLE POLYPROPYLENE, AUTOCLAVABLE		EA	PB0310



PB1250

FUNNELS

DESCRIPTION	SIZE	UNIT	ROWE CODE
ANALYTICAL 65mm DIAMETER POLYPROPYLENE	65mm	EA	PF1605
	75mm	EA	PF1675
BUCHNER PORCELAIN 70mm D FILTER PAPER (237/3)	70mm	EA	WF1060
LONG STEM 65mm DIAMETER POLYPROPYLENE	65mm	EA	PF1379
POWDER 80mm DIAMETER POLYPROPYLENE	80mm	EA	PF1955

JARS / PCR TUBES

DESCRIPTION	SIZE	UNIT	ROWE CODE
Container 70mL With Natural Cap 44mm H x 57mm D Polypropylene	70mL	EA	PV1585
Container, Sample, Unlabelled, Natural Capped, 120mL 108 x 44mm, Polypropylene	120mL	264	PC0033
PCR Tube, 0.2mL, Single, Dome Cap, SPL, PP, 2 Bags Of 500	0.2mL	500	PP0128
Tube Microcentrifuge 0.5mL DNase/RNase/Pyrogen Free Natural, Autoclavable PP	0.5mL	1000	PT0228



JARS / PCR TUBES

DESCRIPTION	SIZE	UNIT	ROWE CODE
Tube Microcentrifuge 1.5mL DNase/RNase/Pyrogen Free Natural, Autoclavable Polypropylene	1.5mL	500	PT0159
Tube Microcentrifuge Ultra Low Retention 2mL DNase/RNase/Pyrogen Free, Autoclavable Polypropylene	2mL	250	PT0165

MEASURING CYLINDER - TALL

DESCRIPTION	SIZE	UNIT	ROWE CODE
Measuring Cylinder 10mL, Tall Form, Class B, Polypropylene	10mL	EA	PC0156
Measuring Cylinder 25mL, Tall Form, Class B, Polypropylene	25mL	EA	PC0157
Measuring Cylinder 50mL, Tall Form, Class B, Polypropylene	50mL	EA	PC0158
Measuring Cylinder 100mL, Tall Form, Class B, Polypropylene	100mL	EA	PC0159
Measuring Cylinder 250mL, Tall Form, Class B, Polypropylene, 2mL Graduations	250mL	EA	PC0160
Measuring Cylinder 500mL, Tall Form, Class B, Polypropylene, 5mL Graduations	500mL	EA	PC0161
Measuring Cylinder 1000mL, Tall Form, Class B, Polypropylene, 10mL Graduations	1000mL	EA	PC0162

Personal Protection **P**

GLOVES - MEDIFLEX - NITRILE / LATEX

DESCRIPTION	UOM	ROWE CODE
Glove Disposable Examination "Nitrile Blue", Powder Free PFNB, Small	100	HG0447
Glove Disposable Examination "Nitrile Blue", Powder Free PFNB, Medium	100	HG0448
Glove Disposable Examination "Nitrile Blue", Powder Free PFNB, Large	100	HG0449
Glove Disposable Examination "FLEXI PF" Small Latex Powder Free Textured	100	HG0465
Glove Disposable Examination "FLEXI PF" Medium Latex Powder Free Textured	100	HG0466
Glove Disposable Examination "FLEXI PF" Large Latex Powder Free Textured	100	HG0477

SAFETY GLASSES

DESCRIPTION	UNIT	ROWE CODE
Glasses Safety Bolle BL30 Anti Scratch Anti Fog Clear Lens	EA	NG0182
Glasses Safety Bolle Overlight II Anti Scratch Anti Fog Clear Lens	EA	NG0050
Glasses Safety S55C-Econospec Anti Scratch	EA	PG1005



PG1005

WIPES/MASKS

DESCRIPTION	UOM	CODE
Kimwipes 12x21cm Fine Grade Low Lint 280/Pk	EA	FK1002
	30	FK1008
Wipes Alcohol "GLR", 42x14cm (70% Isopropyl Alcohol/30% Di Water)	42x14cm	75 HW0028
Alcohol Swabs 70% Isopropyl Alcohol 65x30mm	65x30mm	EA F12520
Hand Sanitiser (WHO Recommended Hand Rub Formulation 1)	500mL	HH0030
Mask Disposable 3 Layer Construction, Ear Loops, Blue	50	HM0166



ROWE SCIENTIFIC
PTY LTD www.rowe.com.au

Contact your nearest
Rowe Scientific representative
to place your order.





For accuracy and professionalism

www.rowe.com.au

A proudly 100% Australian owned
company supplying laboratories



South Australia & NT
Ph: (08) 8186 0523
rowesa@rowe.com.au

Queensland
Ph: (07) 3376 9411
roweqld@rowe.com.au

Victoria & Tasmania
Ph: (03) 9701 7077
rowevic@rowe.com.au

New South Wales
Ph: (02) 9603 1205
rowensw@rowe.com.au

Western Australia
Ph: (08) 9302 1911
rowewa@rowe.com.au