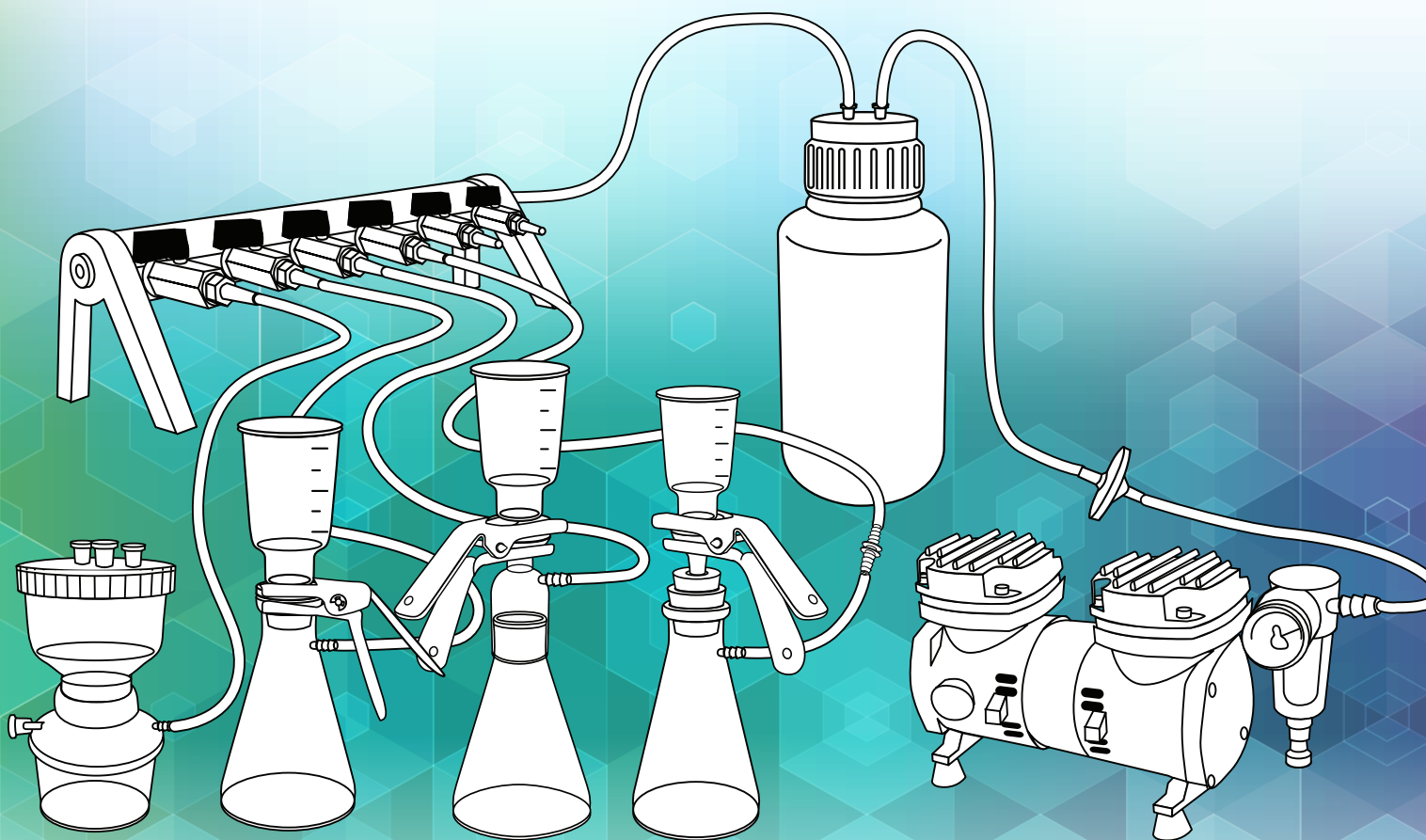




# VACUUM FILTRATION

& LABORATORY FILTER ACCESSORIES

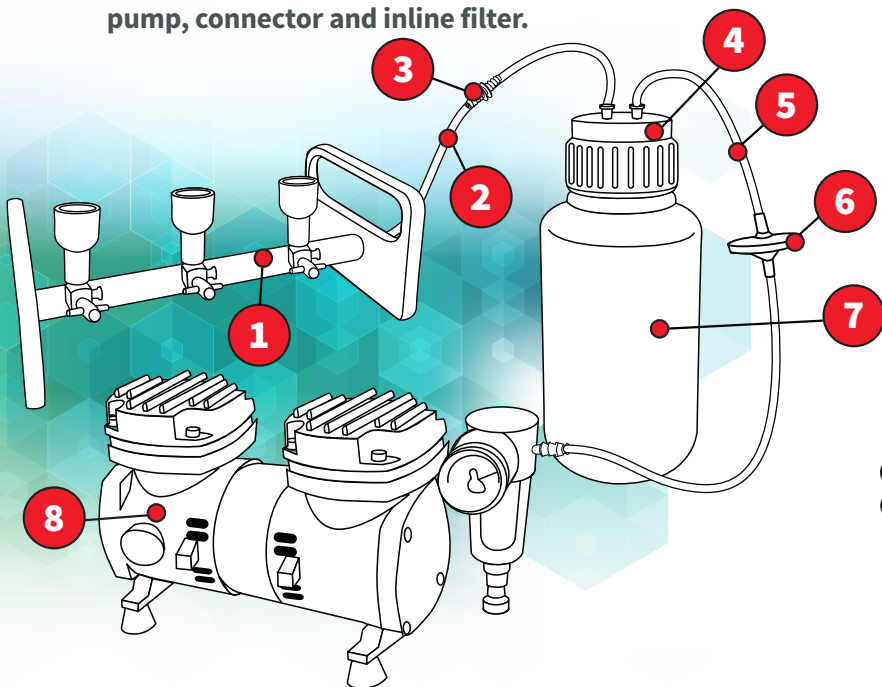




# MICROBIOLOGY & INDUSTRIAL

## 3 PLACE MICROBIOLOGY FILTRATION PACKAGE

This package includes everything you need to accommodate a simple microbiological filtration scenario. Included is a **3 place manifold, 2m of tubing, vacuum bottle, pump, connector and inline filter.**



**1** **3 PLACE FILTRATION MANIFOLD**

- Made from stainless steel and PTFE
- Autoclavable
- Suits No. 8 stopper
- 11mm barbed hose fitting



**7** **HEAVY DUTY VACUUM BOTTLE**

- Made from heavy duty polypropylene
- Autoclavable
- Comes with screw cap with no holes



**6** **INLINE FILTER**

- 50mm diameter
- 0.45 micron hydrophobic PTFE membrane
- Sterile and individually wrapped

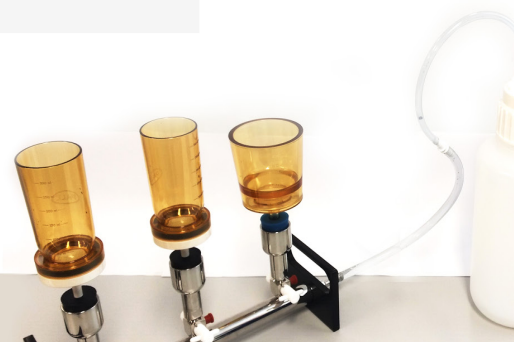


**4** **SCREW CAP CLOSURE**

- 83mm neck I.D
- Used for 4L heavy duty vacuum bottles
- 1/4 inch barbed tubing ports

ROWE CODE	DESCRIPTION
<b>1</b> <b>FM0039</b>	Manifold vacuum filtration 3-place stainless steel suits size No.8 stopper, 11mm barbed fitting
<b>2</b> <b>PT2900</b>	Tubing vinyl clear 10mm I.D 13mm O.D, 1.5mm wall
<b>3</b> <b>PC2620</b>	Connector straight 6.3-9-11mm
<b>4</b> <b>PC0189</b>	Cap, screw closure 83mm neck I.D for 4L heavy duty vacuum bottle with 1/4 inch barbed tubing ports for filling/venting
<b>5</b> <b>PT2800</b>	Tubing 6mm I.D., 9.0mm O.D., 1.5mm wall, clear vinyl
<b>6</b> <b>FF0416</b>	Filter unit in-line 50mm diameter 0.45 micron hydrophobic PTFE membrane stepped hose barb, sterile
<b>7</b> <b>PB0287</b>	Bottle heavy duty vacuum 4L polypropylene autoclavable with screw cap (no holes)
<b>8</b> <b>IP2034</b>	Vacuum pump oil free piston R-series 34L/min 106mbar ultimate vacuum

Please see the back page for available filter holders.



# WATCH OUR LABORATORY FILTRATION DEMO ON OUR WEBSITE

Providing laboratory supplies to the scientific community across Australia since 1987.

We are proudly a 100% Australian owned company.



# VACUUM FILTRATION KITS



**PT2800 PT2900**

## 2 CLEAR VINYL TUBE

- PT2800 - 6mm I.D., 9.0mm O.D
- PT2900 - 10mm I.D., 13mm O.D
- Durable vinyl
- 1.5mm wall thickness



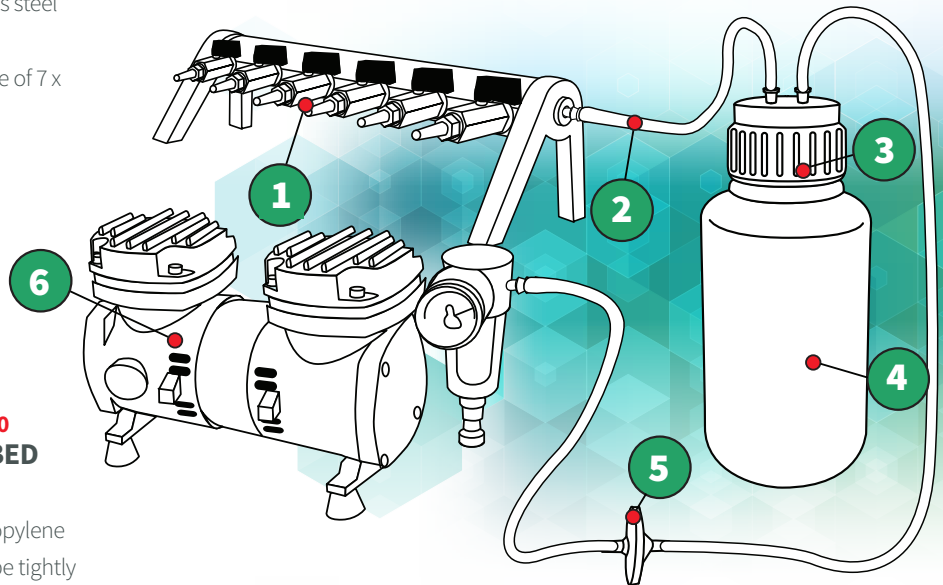
**HV0017**

## 1 6 PLACE FILTRATION MANIFOLD

- Made from stainless steel
  - Autoclavable
- \*requires the purchase of 7 x HM0171 fittings

## 6 PLACE INDUSTRIAL FILTRATION PACKAGE

This package includes everything you need to accommodate a simple industrial filtration scenario. Included is a **6 place manifold, 2m of tubing, vacuum bottle, pump and inline filter.**



**IP2034**

## 6 PISTON VACUUM PUMP

- 34L per minute capacity
- 106mbar maximum vacuum capacity
- 125 watt motor



**PC2620**

## 3 STRAIGHT BARBED CONNECTOR

- Made from polypropylene
- Serrations hold tube tightly to prevent slipping
- Autoclavable

ROWE CODE	DESCRIPTION
1 HV0017	Vacuum pump manifold stainless steel 6 outlet square tube design without fittings
2 PT2800	Tubing 6mm I.D., 9.0mm O.D., 1.5mm wall, clear vinyl
3 PC0189	Cap, screw closure 83mm neck I.D for 4L heavy duty vacuum bottle with 1/4 inch barbed tubing ports for filling/venting
4 PB0287	Bottle heavy duty vacuum 4L polypropylene autoclavable with screw cap (no holes)
5 FF0416	Filter unit in-line 50mm diameter 0.45 micron hydrophobic PTFE membrane stepped hose barb, sterile
6 IP2034	Vacuum pump oil free piston r-series 34L/min 106mbar ultimate vacuum



# FILTER ACCESSORIES



PF2701

## FUNNEL FILTER/HOLDER MAGNETIC 47mm 300mL

These filters have a unique magnetic seal which allows for easy one handed liquid filtration. Constructed of polyphenylsulfone which is compatible with most anti-foaming agents and

many other solvents. Graduated at 50mL increments for accurate sample measurement.



PF1180

## FILTER HOLDER 47mm POLYSULFONE 350mL FUNNEL WITH STEM & No.8 STOPPER, GRAVITY SEAL

A two-piece polysulfone analytical funnel with a unique gravity sealing design. No clamps or locking devices to manipulate. Instead, the Gravi-Seal™

allows easy one-handed operation without danger of filter bypass or sample leakage. Takes a standard 47mm membrane.



GF1154

## FILTER HOLDER GLASS FUNNEL 47mm 300mL, CLAMP, SUPPORT BASE, No. 8 STOPPER

The 47mm glass filter holder is designed for vacuum filtration of aqueous and solvent solutions (<500mL) or for analysis of particulate or microbiological

contamination. These holders have a sintered glass base which is recommended for general filtration.

Contact us today for more information on your laboratory filtration requirements.



FV0001

## FILTER HOLDER 47mm 300mL GLASS FUNNEL AND 1L GLASS COLLECTION FLASK

This includes a 300mL glass funnel, frosted glass base, 1L glass solvent collection flask, anodised aluminium clamp and 50cm of vacuum tubing. Glass components are constructed entirely of borosilicate glass.

Incorporates a 10mm diameter barbed fitting. Recommended for HPLC solvent filtration.



PF1202

## FILTER HOLDER WITH RECEIVER 47mm, 500mL FUNNEL AND RECEIVER, POLYSULFONE

These polysulfone (PSF) filter holders have a 500mL upper chamber and 500mL receiver (all graduated in 50-mL increments). The holder accepts a 47mm diameter membrane. Also available in 250mL (Rowe code PF1216) and 1000mL (Rowe code PF1209)



# MEMBRANES AND SYRINGE FILTERS

Membranes and syringe filters are available in a large variety of diameters, pore sizes and membrane types.

ROWE CODE	DESCRIPTION	PACK SIZE
FF0001	Filter membrane 47mm 0.45 micron mixed cellulose esters	200
FF0007	Filter membrane 47mm 0.8 Micron mixed cellulose esters	200
FF0016	Membrane filter white, gridded sterile 47mm 0.45 micron	200
FF0331	Filter membrane 47mm 0.45 micron, PTFE hydrophilic (PTFE-L)	100
FF0286	Filter membrane 47mm 0.22 micron, polyethersulfone (PES)	100
FF0278	Filter membrane 47mm 0.45 micron cellulose acetate (CA)	100
FF0010	Filter membrane 47mm 5.0 micron PTFE hydrophobic	100



Samples available for evaluation.

## FILTER-BIO

Membrane types including

- PES (polyethersulfone)
- PVDF (polyvinylidene difluoride)
- MCE (mixed cellulose esters)
- CA (cellulose acetate)
- CN (cellulose nitrate)
- Nylon, polypropylene
- PTFE (polytetrafluoroethylene)



[www.rowe.com.au](http://www.rowe.com.au)

South Australia & NT  
Ph: (08) 8186 0523  
rowesa@rowe.com.au

Queensland  
Ph: (07) 3376 9411  
roweqld@rowe.com.au

Victoria & Tasmania  
Ph: (03) 9701 7077  
rowevic@rowe.com.au

New South Wales  
Ph: (02) 9603 1205  
rowensw@rowe.com.au

Western Australia  
Ph: (08) 9302 1911  
rowewa@rowe.com.au