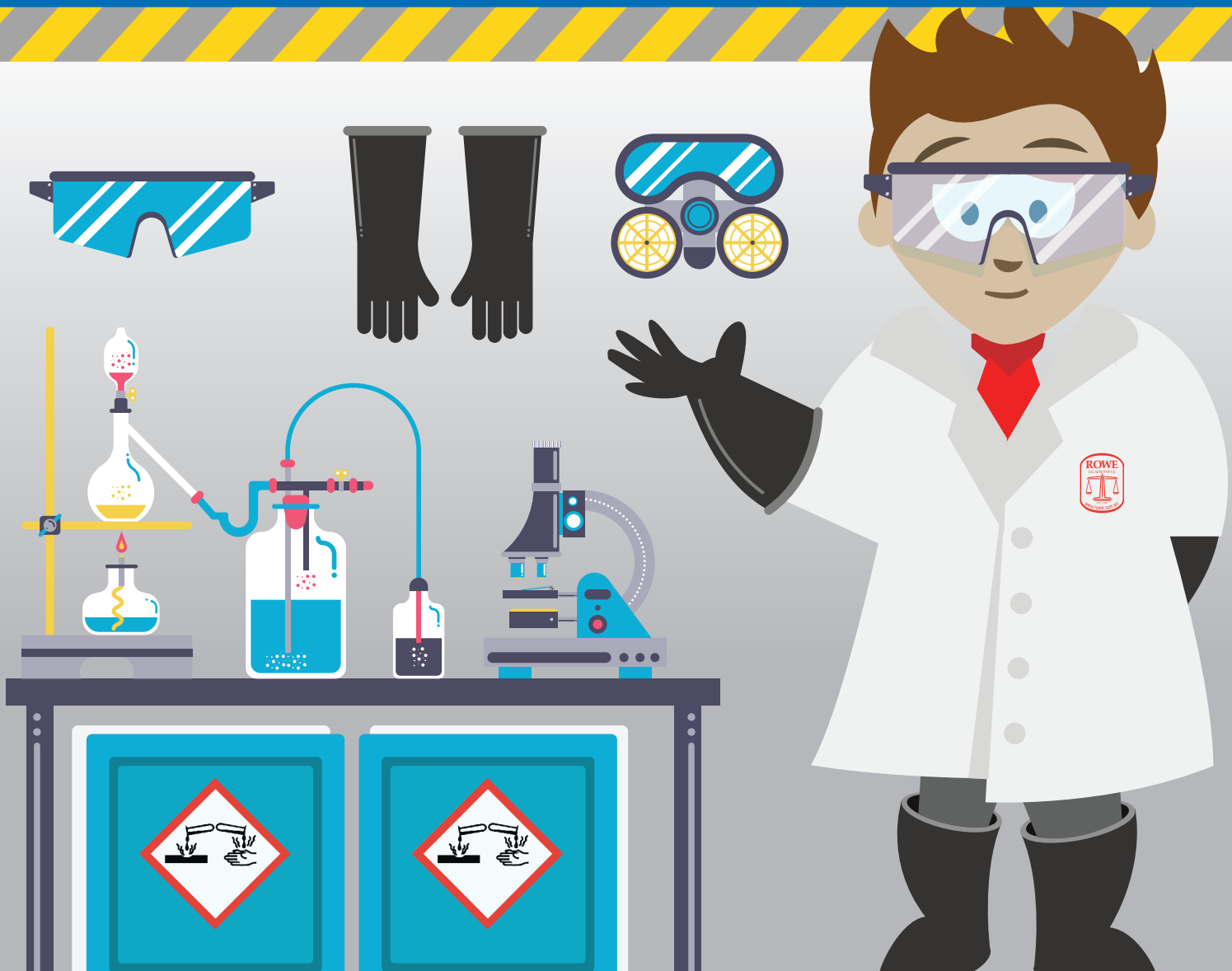




LABORATORY SAFETY

PERSONAL PROTECTIVE EQUIPMENT



GEAR UP WITH COATS & APRONS

APRONS

DESCRIPTION	ROWE CODE	SIZE	QTY
Apron clear plastic medium duty 50" /125cm	PA1920	MED	12
Apron aluminised with sleeves aramid 110cm in length	AP1006	SML	EA
	AP1007	MED	EA
	AP1008	LGE	EA
Apron reinforced PVC black heavy duty	PA1925		EA
Apron white PVC coated nylon bib apron 914mm W x 1219mm L limited acid resistance	PA1040	914x1219mm	EA
Apron disposable LDPE	PA2010	85x150cm	EA
Apron chemical resistant CE category III PVC coated nylon	PA0025		EA
Apron neoprene rubber black	PA0016	900x1150mm	EA
Cryo-apron	CC2234	24" x 48"	EA

PA1925



PA1040



COATS

DESCRIPTION	ROWE CODE	SIZE	QTY
Coat furnace knee length aluminised aramid with wool lining	AC0015	2 XL	EA
Coat aluminised (furnace smock) aramid heavyweight parra wool double breasted tape fastening full length (ankle)	AC1093	LGE	EA
Coat laboratory style-standard, collar-normal, sleeve-standard, cuffs-standard, white internal side pockets polycotton	HC0159	97R	EA
	HC0161	102R	EA
Coat laboratory medium polycotton with mandarin collar knitted cuffs and 3 pockets navy blue	HC0176	MED	EA
Coat laboratory polycotton acid resistant white	HL1796	102R	EA
Coat laboratory, polyester/cotton, semi fire retardant, long sleeves, 3 pockets & "scrunchy" cuffs	HC0124	SML	EA
	HC0125	MED	EA
	HC0126	LGE	EA
	HC0127	X LGE	EA
Coat laboratory poly/cotton white with elastic sleeves and stud fastenings down side of coat	HC0074	SIZE 5	EA
Coverall, Microgard flame retardant, disposable, blue	HC0181	SIZE L	EA
	HC0182	SIZE XL	EA
	HC0183	SIZE 2XL	EA
	HC0184	SIZE 3XL	EA
Coverall Hazguard SMS, blue triple layer with hood, suitable for use with asbestos, disposable	HC0163	LGE	EA
Coverall ECO SMS blue (large, pack 50) triple layer with hood (complies to type 5 & 6 standards)	HC0236	LGE	50 PK

AC0015



HC0124



HC0181



Log into www.rowe.com.au to see your special price.



PROTECT YOURSELF GLOVES, SLEEVES, MASKS

SLEEVES AND SHOE COVERS

DESCRIPTION	ROWE CODE	SIZE	QTY
Arm sleeve PVC clear 450mm (18 inch) light duty, 0.1mm thick, with elastic cuff	HA1050	450mm	100
Sleeve protector, 40cm long, light touch, blue PP	HA1057	400mm	100
Shoe cover disposable blue overshoe non - slip	HS2050	GENERIC	500
Shoe cover disposable blue (Surefoot), PP non - slip	HS2009	GENERIC	500
Shoe cover, disposable blue overshoe	HS2051	GENERIC	300

HA1057



HS2050



EAR PLUGS & MUFFS, MASKS

DESCRIPTION	ROWE CODE	QTY
Ear plug Prosafe uncorded disposable class 4	RE1005	200
Ear muff Peltor H9B neckband/behind head	HE1405	100
Mask dust, nuisance AG respirator with valve	HD1060	10
Mask dust P2	HD1053	10
Respirator/face mask disposable P1 for dust applications as per AS/NZ 1716	HR0013	20
Respirator, full face, 3M 6900, large	HR0068	EA
Respirator face mask P2 disposable with valve & carbon filter	HR0069	10
Mask face shield bolle sphere complete face shield with head gear and visor	NM0003	EA
Mask, face shield, complete with brow and chin guard, clear polycarbonate visor	HM1086	EA
Mask, face shield, gold, heat & UV reflective, complete with ratchet headgear	HM1030	EA
Hard hat visor holder	AP1355	EA

RE1005



HE1405



HD1060



GLOVES

DESCRIPTION	ROWE CODE	SIZE	QTY
Ansell			
Glove disposable Touch n Tuff powder free textured latex Powder Free Latex	HG0052	SML	100
	HG0053	MED	100
	HG0054	LGE	100
	HG0055	X LGE	100
Glove disposable Touch n Tuff powdered smooth latex Latex	HG0047	SML	100
	HG0048	MED	100
	HG0049	LGE	100
	HG0050	X LGE	100
	Glove neoprene Micro touch affinity latex and powder free Powder Free Latex	HG2010	SML
HG2015		MED	100
HG2020		LGE	100
HG2025		X LGE	100
Gloves disposable nitrile black Microflex powder free Powder Free Nitrile		HG0080	SML
	HG0081	MED	100
	HG0082	LGE	100
	HG0083	X LGE	100

HG0054



HG0054



DESCRIPTION	POWDER FREE	MATERIAL	ROWE CODE	SIZE	QTY
Gloves disposable nitrile blue Microflex powder free	Powder Free	Nitrile	HG0166	SML	50
			HG0167	MED	50
			HG0168	LGE	50
			HG0180	X LGE	50
Gloves disposable nitrile, powder free, extended cuff, Touch n Tuff	Powder Free	Nitrile	HG2040	SML	100
			HG2041	MED	100
			HG2042	LGE	100
			HG2043	X LGE	100
Gloves disposable nitrile powder free Touch n Tuff	Powder Free	Nitrile	HG1891	SML	100
			HG1893	MED	100
			HG1897	X LGE	100
Gloves disposable nitrile Touch n Tuff lightly powdered		Nitrile	HG1892	MED	100
			HG1894	LGE	100
			HG1896	X LGE	100
Gloves examination nitrile blue micro-touch latex & powder free textured surface	Powder Free	Latex	HG18884	SML	100
			HG18886	MED	100
			HG1889	LGE	100
			HG1888	X LGE	100
Gloves nitrile blue TNT powder free	Powder Free	Nitrile	HG2400	SML	100
			HG2405	MED	100
			HG2410	LGE	100
			HG2415	X LGE	100
Gloves Versatouch blue powder-free nitrile	Powder Free	Nitrile	HG0001	SML	100
			HG0002	MED	100
			HG0003	LGE	100
			HG0004	X LGE	100
Glove butyl ChemTek		Butyl	HG1801	SIZE 7	PAIR
			HG1176	SIZE 8	PAIR
			HG2045	SIZE 9	PAIR
Glove barrier flat film		Layered Film	HG1178	SIZE 9	PAIR
			HG1177	SIZE 10	PAIR
Gloves size 7 pink silver lined		Rubber	HG1440	7	12pr
			HG1500	7.5	12pr
			HG1550	8	12pr
			HG1600	8.5	12pr
			HG1650	9	12pr
BASTION					
Gloves disposable extra long cuff 300mm micro textured blue nitrile powder free	Powder Free	Nitrile	HG0009	SML	100
			HG0011	MED	100
			HG0012	LGE	100

HG0166



HG0180



HG1892



HG2040



HG18884



HG0001



HG1801



HG0011



HG0196



'PROTECT YOUR HANDS - HANDLE WITH CARE'

DESCRIPTION	ROWE CODE	SIZE	QTY
Gloves disposable extra long cuff 300mm micro textured blue nitrile powder free	HG0013	X LGE	100
Gloves nitrile ultra soft powder free micro textured green	HG0196	MED	100
	HG0197	LGE	100
RCR			
Gloves examination latex Securitex powder free textured fingers	HG1838	SML	100
	HG1833	MED	100
	HG1810	LGE	100
	HG1837	X LGE	100
Gloves disposable neoprene chemoprene powder free	HG1622	SML	100
	HG1621	MED	100
	HG1620	LGE	100
Gloves nitrile blax powder-free disposable	HG2050	SML	100
	HG2051	MED	100
	HG2052	LGE	100
	HG2053	X LGE	100
Gloves disposable nitrile powder free	HG2091	MED	100
	HG2093	X LGE	100
Gloves disposable nitrile nite safe powder-free	HG1857	SML	100
	HG1858	MED	100
	HG1859	LGE	100
Medirite			
Gloves examination powder free latex	HG1917	SML	100
	HG1916	MED	100
	HG1915	LGE	100
	HG1914	X LGE	100
Gloves examination powder free nitrile supermax	HG1912	SML	100
	HG1911	MED	100
	HG1908	LGE	100
	HG1907	X LGE	100
Gloves nitrile powder free disposable long cuff 300mm blue	HG0198	SML	100
	HG0191	MED	100
	HG0186	LGE	100
	HG0188	X LGE	100
Sigma Aldrich			
Leather gloves	CL1451	SML	PAIR
	CL1450	MED	PAIR
	CL1449	LGE	PAIR
	CL1452	X LGE	PAIR
Other gloves			
Gloves aluminised kevlar with woven kevlar palm for high heat (preox)	HG0106		EA
Gloves fine cotton white	HG1220	SML	EA
	HG1222	LGE	EA

HG1838



HG1622



HG2050



HG1857



HG1912



HG1917



CL1451



HG0106



Log into www.rowe.com.au to see your special price.

DON'T FORGET FACE, EYE & HEAD PROTECTION

FACE, EYE AND HEAD PROTECTION

DESCRIPTION	ROWE CODE	QTY
Brow guard with ratchet headband	AP1050	EA
Hard hat white, cap slotted Tough Master 3	HS0900	EA
Mask face shield Bolle Sphere complete face shield with head gear and visor	NM0003	EA
Safety glasses Bolle Axis 2 anti scratch anti fog clear lens	NG0011	EA
Safety glasses Bolle Cobra spectacle anti scratch anti fog clear lens	NG0021	EA
Safety glasses Bolle Hustler anti scratch anti fog clear lens gloss black frame	NG0037	EA
Safety glasses Bolle Overlight II anti scratch anti fog clear lens	NG0050	EA
Safety glasses Bolle Prism anti scratch anti fog clear lens	NG0055	EA
Safety glasses Bolle Prism Seal anti scratch anti fog clear lens	NG0063	EA
Safety glasses Bolle Rush+ seal platinum anti scratch anti fog clear lens assembled with gasket and strap	NG0083	EA
Safety glasses, Bolle Blade clear lens	PS1176	EA
Safety glasses, Bolle Rush plus, clear lens	PS0230	EA
Safety glasses clear plastic polycarb fog/scratch resistant coating	PS1144	EA
Visor green Thermoguard shade 5 250mm x 400mm	AV1415	EA
Visor face shield 200mm clear	AP1350	EA

AP1050



NM0003



PS0230



NG0083



PS1176



NG0050



NG0063



HAND CLEANERS AND WIPES

DESCRIPTION	ROWE CODE	QTY
Epic wipes 42x34.5cm blue	FE2000	250
ISO wipes, lint free anti-bacterial, 75 per plastic can	FI2500	12
Kimwipes 12x21cm fine grade low lint 280/pk	FK1002	EA
Kimwipes 12x21cm fine grade low lint 280/pk (bulk packs)	FK1008	30
Kimwipes delicate task wipers 30 x 30cm (196/bx) (bulk packs)	FK1009	15
Kimwipes Wypall L10 heavy duty centrefeed wipers, white, 20cm x 300m roll	FK1016	4
Kimwipes Wypall L20 heavy duty centrefeed wipers, perforated white 20cm x 165m roll	FK1012	4
Hand cleaner cream - mercury decontaminant	CH0027	9kg
Mercon wipes, for mercury decontamination	CM0088	70
Wipers roar blue 32.5 x 49.5cm	HW2610	250
Wipes alcohol, antiseptic, 70% isopropyl alcohol, 210 x 136mm sheets in tub	HW2615	100

FE2000



FI2500



FK1008



FK1009



FK1016



HW2610



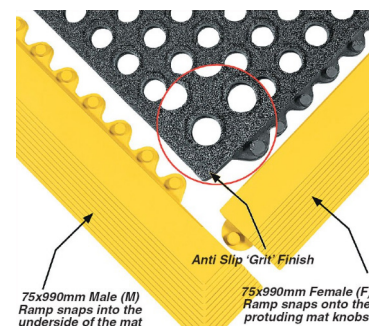
BE PREPARED AND ALWAYS WORK SAFELY

SAFETY BOTTLE CARRIERS & PIPETTE FILLERS

DESCRIPTION	ROWE CODE	QTY
Safety bottle carrier, cone cap style, 4L polyethylene	PS0126	EA
Safety bottle carrier, truncated, 2.5L polyethylene	PS0127	EA
Safety bottle carrier, truncated, 4L polyethylene	PS0128	EA
Carrier flask 5L, 23cm square base, 45cm overall height	HC1280	EA
Carrier, bottle, 2 position for 2.5L winchester (white plastic coated wire)	HB1050	EA
Carrier, bottle, 2 position for 4L bottle (white plastic coated wire), 165x165mm I.D. each side	HB1070	EA
Pipette filler "Levo Plus", 0.1-100mL, with AC adapter 17400032 and filter 17000103	DP0094	EA
Filler pipette 3 valve for pipettes up to 25mL red rubber	HP1505	EA
Filler pipette 3 valve long for all size pipettes red rubber	HP1455	EA
Filler, pipette, flip for 0.1 to 100mL pipettes, red rubber	HF4000	EA

SAFETY MATS

DESCRIPTION	ROWE CODE	QTY
Mat safety cushion 900x1500mm	HR1341	EA
Matting safety "ergonomic wet or dry", 900 x 900mm, with draining holes	HM0022	EA
Matting safety bevelled edge, 900 x 75mm, male yellow (Premium)	HM0024	EA
Matting safety bevelled edge, 900 x 75mm, female yellow (Premium)	HM0023	EA
Matting, safety bevelled edge, 900 x 75mm, male yellow	HM0054	EA
Matting, safety bevelled edge, 900 x 75mm, female yellow	HM0053	EA



SAFETY SHOWERS, EYE WASH STATIONS, SIGNS & TAPS

DESCRIPTION	ROWE CODE	QTY
Bottle eye wash 500mL plastic	PE1050	EA
Bottle, eye wash for saline solution, 1L	PE1040	2
Eye wash station with 200mL sterile pH neutralising solution and 500mL sterile saline eyewash	PE0005	EA
Eyewash water preservative solution 236mL	CE0308	4
Station eye wash rack plastic, without eye wash bottle (Requires PE1050)	PE1100	EA
Station eye wash, aerated drench twin head	HA1060	EA
Safety shower combination deluge shower, aerated eye/face wash, hand & food operated	HS1007	EA
Safety shower and eye wash (no foot pedal)	HS1005	EA
Safety shower stainless steel free standing combination with eye/face wash, dual outlets, hand & foot operated	HS1009	EA
Safety shower stainless steel free standing combination with eyewash, single outlet, hand & foot operated	HS1011	EA
Safety shower, bench mounted, hand held, eye wash, body spray	HS1012	EA
Label "eye protection" 50mm diameter	HL1030	10
Sign safety "eye protection must be worn" 225mm x 300mm	HS3201	EA
Sign, emergency eye wash 225mm x 300mm metal	HS2850	EA
Sign, emergency eye wash 225mm x 300mm metal	HS2850	EA
Sign, emergency eye wash metal 450x600mm	HS2855	EA
Sign, eye protection must be worn metal 225x300mm	HS2745	EA
Sign, eye protection must be worn metal 225x300mm	HS2745	EA
Sign, hearing and eye protection must be worn 225 x 300mm poly	HS3066	EA

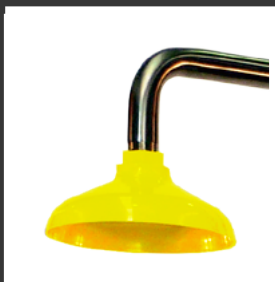
DESCRIPTION	ROWE CODE	QTY
Station eyewash, portable, 9L eye and body wash	HS1080	EA
Tap bench mounted laboratory mixing set with swivel outlet and detachable tube nozzle, type 19	HT1629	EA
Tap laboratory spray shower assembly sp271 with fitting m15x1 to m22	HT1686	EA
Tap laboratory swivel with barbed outlet	HT1684	EA
Tap laboratory, slimline bench mounted, mixing set with swivel goosneck outlet, powder coat finish	HT0055	EA
Tap, laboratory two way 90 degree bench mounted for compressed air up to 8 bar	HT0024	EA
Test kit for safety showers and eye wash station, includes test sock with handle and receptacle	HS1018	KIT

SAFETY SHOWER & EYE WASH STATION

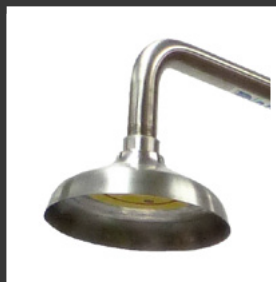
ROWE CODE **HS1007**

FEATURES INCLUDE:

- **Structural components made of 304 stainless steel**
For strength and durability
- **316 stainless stay-open valves**
For dependable operation and performance
- **Shower head made of ABS plastic or optional 316 stainless steel**
With a unique conical water pattern to gently deliver large volumes of water ensuring complete decontamination
- **Shower flow control regulator**
Limiting shower output to 90LPM
- **Interchangeable nozzles**
Converting from an eye wash to an eye-face wash



Deluge Plastic Shower Head



Deluge Stainless Steel Shower Head



Aerostream Triple Nozzle (Aerated)



Aerostream Single Nozzle (Aerated)

Ask us for a quote today.

KEEP YOUR AREA SAFE ENVIRONMENTAL SAFETY

INDICATOR STRIPS & AIR MONITORING

DESCRIPTION	ROWE CODE	QTY
Drager tube ammonia 0.25/A 0.25-3ppm	IC1790	10
Drager tube benzene 0.2 - 10ppm	NB0001	10
Drager tube carbon dioxide 0.5 to 10% by volume	IC1611	10
Drager tube carbon monoxide 0.3 to 7% by volume	ND1610	10
Drager tube hydrogen sulfide 0.2 to 7% by volume	IC1651	10
Drager tube mercury 0.1/B 0.05-2mg/m3	ID1676	10
Drager tube natural gas test	IC1607	10
Indicator paper litmus blue	FI1400	100
Indicator paper litmus red	FI1450	100
Indicator paper pH 1-11 tritest	FI1735	5m
Indicator paper pH 1-12 duotest	FI1700	5m
Indicator strips formaldehyde 10-200mg/L quantofix	NQ1200	100
Indicator strips medium level free chlorine 10-200ppm	FI1829	100
Indicator strips peroxide 0-100mg/L Quantofix	NQ1600	100
Indicator strips pH 0-14 in snap cap tube (Best seller)	FI1101	100
Indicator strips sulfite 0-1000mg/L Quantofix	NQ1720	100
Kitagawa gas detection pump AP-20 with hand strap, rubber tube connectors, grease, carry case & manual	NK1190	EA
Kitagawa tube carbon dioxide 1-20% (126SH)	NK1100	10
Kitagawa tube hydrogen sulfide 1-60ppm	NK1065	10

IC1790



FI1700



FI1735



NK1100



AIR SAMPLING PUMPS

Gilian®

When dependability counts, choose a reliable name in air sampling pumps.



GilAir Plus Personal Air Sampling Pump (1 - 5,000 cc/min)



Gilian 800i Air Sampling Pump (200 - 800 cc/min)



Gilian 10i Air Sampling Pump (4 - 10 LPM)



Gilian 12 Air Sampling Pump (4 - 12 LPM)



Gilian GilAir-3 and GilAir-5 Air Sampling Pumps (0 - 3,000 / 0 - 5,000 cc/min)



GilAir Gibrator-2 Wet Cell Diagnostic Kit (20mL - 6L/m)

KEEP ORGANISED SAFETY SIGNS AND CABINETS

LABELS & SIGNS

DESCRIPTION	ROWE CODE	QTY
Label 20 x 20mm TOXIC (Class 6)	HL1380	250
Label 20 x 20mm MISCELLANEOUS DANGEROUS GOODS (Class 9)	HL1530	250
Label 20x20mm FLAMMABLE LIQUID dispenser pack (Class 3)	HL1150	250
Label 20x20mm FLAMMABLE SOLID (Class 4)	HL1310	250
Label ACUTE TOXICITY 20 x 20mm (Class 6.1)	HL0089	ROLL
Label CORROSIVE 20 x 20mm (Class 8)	HL0091	ROLL
Label EXPLOSIVE 20 x 20mm (Class 2)	HL0086	ROLL
Label FLAMMABLE 20 x 20mm (Class 3)	HL0087	ROLL
Label FLAMMABLE GAS 25 x 25mm (Class 2)	HL0067	1000
Label FLAMMABLE SOLID 25 x 25mm (Class 4)	HL0069	1000
Label INFECTIOUS SUBSTANCE 25 x 25mm (Class 6.1b)	HL0070	1000
Label TOXIC 25 x 25mm (Class 8)	HL0073	1000
Sign custom made metal diamond shape CORROSIVE 400mm x 400mm GHS05	HS0324	EA
Sign custom made metal diamond shape ENVIRONMENT HAZARD 400mm x 400mm GHS09	HS0326	EA
Sign custom made metal diamond shape HEALTH HAZARD 400mm x 400mm GHS08	HS0321	EA
Sign custom made metal diamond shape TOXIC 400mm x 400mm GHS06	HS0323	EA
Sign safety emergency eye wash polypropylene	HS0249	EA

HL1380



HL0067



HS0249



CABINETS AND STORAGE

Corrosive

Metal Storage Cabinets



EXTERNAL DIMENSIONS (mm)	ROWE CODE	CAPACITY
800 H x 500 W x 450 D	HC3085	30L
1065 H x 500 W x 450 D	HC3255	60L
800 H x 920 W x 615 D	HC3265	100L
1750 H x 1100 W x 500 D	HC3202	250L
1880 H x 806 W x 804 D	HC0255	250L

Flammable

Metal Storage Cabinets



EXTERNAL DIMENSIONS (mm)	ROWE CODE	CAPACITY
800 H x 500 W x 450 D	HC3082	30L
1065 H x 500 W x 450 D	HC3095	60L
800 H x 920 W x 615 D	HC3015	100L
1220 H x 1100 W x 450 D	HC3060	160L
1750 H x 1100 W x 500 D	HC3302	250L
1880 H x 806 W x 804 D	HC3315	250L

Oxidizing

Metal storage Cabinets



EXTERNAL DIMENSIONS (mm)	ROWE CODE	CAPACITY
800 H x 500 W x 450 D	HC3410	30L
1065 H x 500 W x 450 D	HC3201	60L
800 H x 920 W x 615 D	HC3415	100L
1220 H x 1100 W x 450 D	HC3420	160L
1750 H x 1100 W x 500 D	HC3309	250L

Toxic

Metal storage Cabinets



EXTERNAL DIMENSIONS (mm)	ROWE CODE	CAPACITY
800 H x 500 W x 450 D	HC3395	30L
1065 H x 500 W x 450 D	HC0028	60L
800 H x 920 W x 615 D	HC3010	100L
1750 H x 1100 W x 500 D	HC3230	250L

HC3215



HC3085



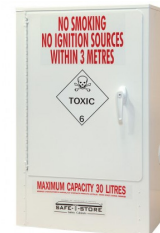
HC3082



HC3410



HC3395



Corrosive

Polyethylene Storage Cabinets



EXTERNAL DIMENSIONS (mm)	ROWE CODE	CAPACITY
800 H x 500 W x 470 D	HC3215	50L
800 H x 985 W x 470 D	HC3218	100L
1225 H x 985 W x 470 D	HC3219	160L
1820 H x 1100 W x 450 D	HC3001	250L

CONTAIN AND AVOID SPILLS WITH HAZARD CLEAN UP AND SPILL STATIONS

HAZARD CLEAN UP

DESCRIPTION	ROWECODE	QTY
Spill kit acid Neutralising 10L pail	HS0179	KIT
Spill station oil and petroleum response kit 45L	HS0196	KIT
Spill station universal oil/chemical kit 180L	HS0201	EA
Safety kit - base/alkali spill (20L bucket)	CS8857	KIT
Safety kit - solvent spill (20L bucket)	CS8915	KIT
Safety kit - solvent spill (brush+pan with inert absorbent)	CS8900	KIT
Spill-x chemical spill treatment kit (multi purpose)	CS8936	KIT
Spill station, chemical spill response kit for acid/solvent/caustic spills in nylon bag	CS8906	KIT
Spill station, chemical spill response kit 50L, for acid/solvent/caustic spills includes 50 pads, 3 booms and 3 waste bags	CS1184	KIT
Tray, spill, 1-drum floor bund	PT1493	KIT
Mercury spill kit small	CM0086	EA
Mercury spill treatment kit Chemizorb-Hg	CM1176	KIT
Mercury spill kit large	HC0965	EA
Pillow, chemical absorbent "Unisorb" 37x58cm	HP0966	EA
Chemical unisorb spill kit pads 28x32cm, 180gsm regular thickness	HC0962	50
Chemical unisorb mini boom 1.2m x 7.5cm	HC0959	EA
Kit spill chemical and hydrocarbon disposal bag plastic	HC0969	KIT
Drum bund 100L polyethylene	PD0016	EA
Tray, spill, 1-drum floor bund	PT1493	EA
Workfloor for 2 drums (low profile) banded pallet plastic	HW0005	EA

HS0196



CM0086



CM1176



PT1493

SPILL STATION 1-DRUM FLOORBUND

- Ideal for small decanting or liquid collection area
- Low profile for ease of loading
- Can hold up to 10 x 25 litre containers
- Seamless design for maximum sump capacity
- Polyethylene construction for maximum durability



HW0005

WORKFLOOR FOR 2 DRUMS (LOW PROFILE) BUNDED PALLET PLASTIC

This low profile SAFE-T-BUND® 2 drum workfloor is a solution for storing smaller drums, containers or batteries where space is limited.

A durable design that will satisfy most environmental protection requirements.



How to order online at your convenience using the Rowe Scientific Web Store and its easy to use features.

As a guest, when you arrive at the Rowe Scientific web store, you can search for products and populate a trolley. To obtain pricing, please request a quote on your trolley of products. Clients with a login account will see pricing directly, and be able to place orders over the Rowe Scientific web store.

How to Log In

If you have a login account, enter your username and password in the login panel at the top right hand corner. This will log you into your personalised Web Store account and show your special pricing.

Your Welcome Panel

When you have successfully logged in, you will see your welcome panel to the right. Here you will find some useful features that are explained on this page.

My Backorders

My backorders is a searchable list of your current back orders with Rowe Scientific. This data is updated overnight to keep you fully informed.

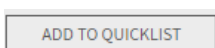
Quick Order

YOUR TEN MOST PURCHASED ONLINE ITEMS			
Enter quantity on any of the items in the below lists then hit the 'Add all to Trolley' button at the bottom of the page.			
Items		Qty	UOM
CB3515	BUFFER pH 10.00 (BLUE) SOLUTION NIST TRACEABLE, IN CONTAMINATION PROOF BOTTLE (R608+)	\$19.71	<input type="checkbox"/> 500mL
FP1041	FILTER PAPER 25.0cm WET STRENGTHENED (MN722) IN BROWN PAPER PACKING PARTICLE RETENTION IS BETWEEN 7-12 MICRON (400722025)	\$34.82	<input type="checkbox"/> 100

Quick Order allows you place orders from a list of routinely ordered products. There are two parts to your quick order page.

Your top ten recent purchases or a manual list made up of items you add to your quick order list which are grouped by product type e.g. Glassware for glass beakers etc.

To add a product to your quick order list, click on the add to quicklist button on the product listing.



If the button does not appear on an item, it is already in your quick order list.

To order items directly by quick order list, simply enter the quantity required for each item being ordered then select the add to trolley button. You will see these items appear in your trolley panel and the total value of your order.

You can continue searching and shopping for products or view your trolley and process your order.

Please note: only orders placed online appear in the list below	
view last 10 orders	
Order No. 211611 / Customer Ref. Carttest	
Product ID	Description
FF2227	FILTER PAPER 15.0cm SIMILAR TO Gr4 (MN617) (4340
FF4648	FILTER PAPER GLASS FIBRE 11.0cm SIMILAR Gr GF/B

Order History

Here you can see a list of recent online orders placed via our web store.

The Search Bar

The search bar functionality on the right allows you to string key words together as you would a Google search. e.g. 'beaker 250mL' the results will list those items found which best match the exact criteria to the top of the results page. When you use the product filter buttons a second inner search bar appears in the search results page allowing you to drill down from the results using key words.

Search by YOUR part number

We can upload your part numbers (where supplied by you) for contract lines allowing you to also search by your part number for easy and accurate ordering of what you need. Your part number will appear in red in brackets directly after the Rowe code.

FF2900 (10617517) FI
(MN1672) (472032)
Unit:100 Local Stock:64
Est. Lead days if no local or

See your agreed pricing

You will see your agreed contract and special pricing. This is indicated by the words **Your contract/special price** above the price.

Your Special price
\$10.00
VOLUME PRICING
QTY

Availability

You can check the availability and estimated lead times on products. Faster lead times may be available on request. The national stock is the total of our stock across the country.

TRACEABLE, IN CONTAMINATION PRO (R608+)
Unit:500mL Local Stock:463 National Stock:78
Est. Lead days if no local or national stock:5
SDS C OF A ADD TO QUICKLIST

www.rowe.com.au

South Australia & NT
Ph: (08) 8186 0523
rowesa@rowe.com.au

Queensland
Ph: (07) 3376 9411
roweqld@rowe.com.au

Victoria & Tasmania
Ph: (03) 9701 7077
rowevic@rowe.com.au

New South Wales
Ph: (02) 9603 1205
rowensw@rowe.com.au

Western Australia
Ph: (08) 9302 1911
rowewa@rowe.com.au